



NS211 Series



Certified to
NSF/ANSI/CAN 61-G & 372

- 1/2" NPT
- Nylon Body
- 2-Way
- Piloted Diaphragm
- Normally Closed



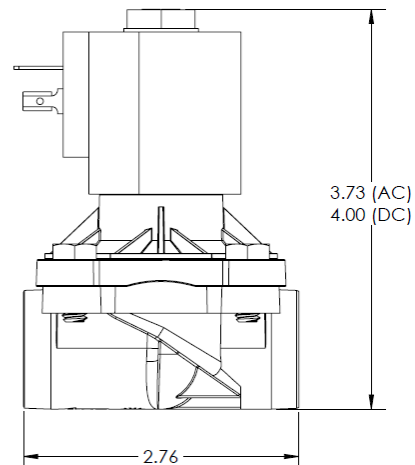
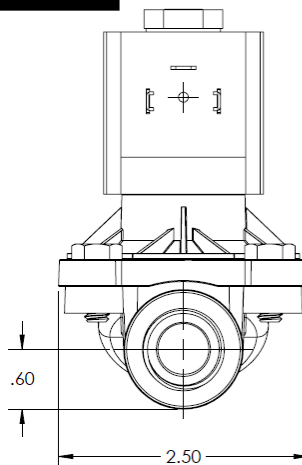
Materials	Seals:	NSF Approved EPDM	
	Orifice:	Pilot Main	Stainless Steel Nylon
Electrical	Housing:	NEMA 4/4X Encapsulated - 1/2" Conduit	
	Optional Housings:	DIN	
	Standard Voltages:	24, 120, 240, AC, 60 and/or 50 Hz. Available 6, 12, 24 DC Contact GC Valves Customer Svc. For Additional Voltages	
	Voltage Tolerance:	± 10% of applicable voltage	
	Coil Classes:	F, H, N	
	Standard Lead Length:	24 inches	
Operating Temperature	Ambient (Nominal):	32° F to 125° F	
Mounting	Position:	Any	
Approvals*	Agency:	NSF/ANSI - 61-G / NSF-372 / UR Recognized	

* Not available for all variations

Dimensions/Weight

Weight (oz.)

13.6



GC Valves Customer Service: 800-828-0484 (7:30 AM to 5:00 PM ET)

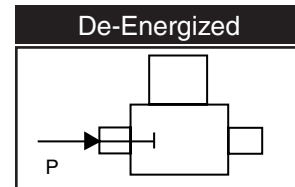
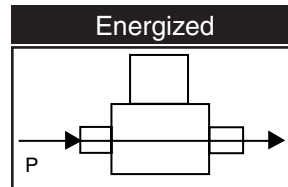
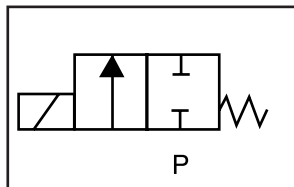
1/2-P-NS211-1



S211 – 1/2" NPT, Nylon Body, Normally Closed

Valve Selection List

Normally Closed



Pipe Size	Orifice Size	C _v	Minimum	Operating Pressure Differential (psi)				Max Fluid Temp.	Seal Material	Power Consumption (Watts)		Model Code
				Maximum						AC	DC	(120V/60HZ — 110V/50HZ Shown)
				Air/Gas		Water						
				AC	DC	AC	DC					
NPT	IN							°F				Nylon Body
1/2	5/8	4.3	4	--	--	150	100	180	EPDM	8	10	NS211GF02CPDG4

Part Numbering

1	2	3	4	5	6	7	8	9	10	11	12	13	14
<div>N</div>	<div>S</div>	<div>2</div>	<div>1</div>	<div>1</div>	<div>G</div>	<div>F</div>	<div>0</div>	<div>2</div>	<div>C</div>	<div>P</div>	<div>D</div>	<div>G</div>	<div>4</div>
Series				Operating Mode	Housing*	Coil Class*	Voltage*		Seal Material	Body Material	Pipe Connection	Orifice Size	
NS21				1: Normally Closed	G: Conduit Y: DIN	F: Class F	02: 120/60 110/50		C: EPDM	P: Nylon	D: 1/2" NPT	G4: 5/8"	
* See the "Engineering Guide" for additional voltages, variations and options.													

Coil Data

Coil Family	
Type	Size
AC	S3
DC	S4

Frequency (Hz)	60	50
Nominal Power (VA)	Inrush	36
	Holding	13

GC Valves Customer Service: 800-828-0484 (7:30 am to 5:00 pm ET)