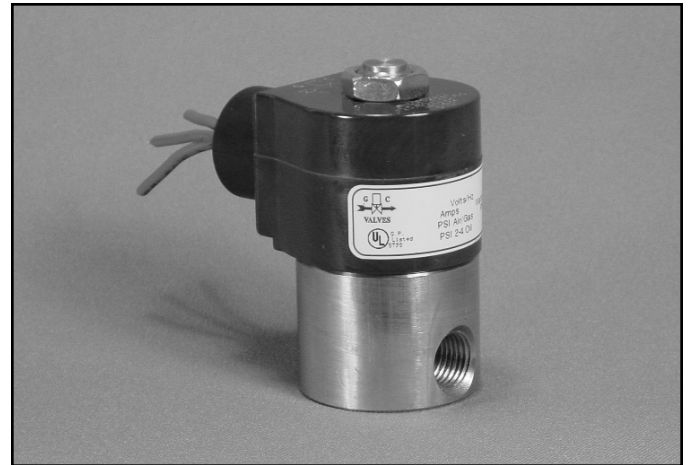


## 1/4" NPT Stainless Steel Body 2-Way Direct Acting Normally Closed

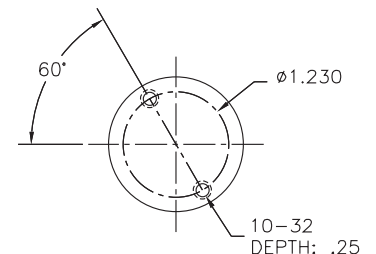
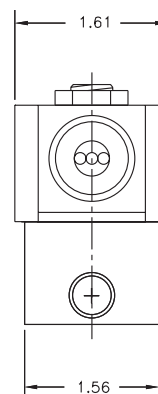
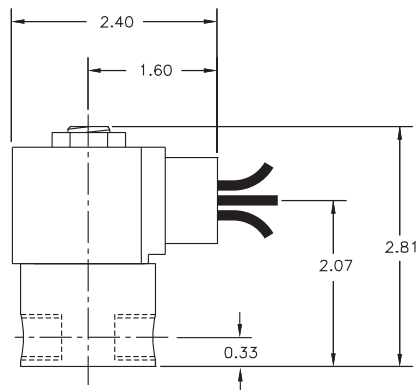


Materials	Seals:	NSF Approved EPDM
	Orifice:	Stainless Steel
Electrical	Standard Housing:	NEAM 4/4X Encapsulated - 1/2" Conduit
	Optional Housings:	Contact GC Valves Customer Service for available options.
	Standard Voltages:	24, 120, 240 AC 60 Hz; 50 Hz available 6, 12, 24 DC; Contact GC Valves Customer Service for Additional Voltages.
	Voltage Tolerance:	±10% of applicable voltage
	Coil Classes:	F, H, N
	Standard Lead Length:	24 inch
Operating Temperature	Ambient (Nominal):	32°F to 125°F
Mounting	Position:	Any
Approvals*	Agency:	NSF/ANSI - 61-G / NSF-372 / UR Recognized

\* Not available for all variations

### Dimensions/Weight

**Weight (lbs.)**  
1.1

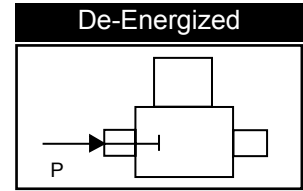
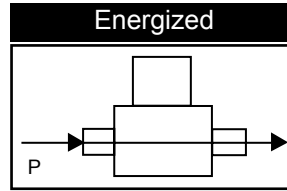
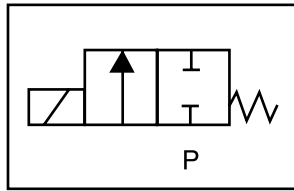




# NS311 – 1/4" NPT, Stainless Steel Body, Normally Closed

## Valve Selection List

Normally Closed



Pipe Size NPT	Orifice Size in.	C <sub>v</sub>	Minimum	Operating Pressure Differential (psi)								Max Fluid Temp. °F	Seal Material	Power Consumption (Watts)		Model Code (120V/60HZ — 110V/50HZ Shown)
				Maximum										AC	DC	
				Air/Gas		Water		Light Oil		Steam*						
				AC	DC	AC	DC	AC	DC	AC	DC			AC	DC	Stainless Steel Body
1/4	1/32	.03	0	—	—	2000	2000	—	—	—	—	176	EPR	8	9	NS311GF02C3BC1
	3/64	.05	0	—	—	770	420	—	—	—	—	176	EPR	8	9	NS311GF02C3BC3
	1/16	.10	0	—	—	560	185	—	—	—	—	176	EPR	8	9	NS311GF02C3BC5
	5/64	.15	0	—	—	400	150	—	—	—	—	176	EPR	8	9	NS311GF02C3BC7
	3/32	.21	0	—	—	300	130	—	—	—	—	176	EPR	8	9	NS311GF02C3BC9
	7/64	.14	0	—	—	210	90	—	—	—	—	176	EPR	8	9	NS311GF02C3BD3
	1/8	.32	0	—	—	155	60	—	—	—	—	176	EPR	8	9	NS311GF02C3BD5
	5/32	.43	0	—	—	105	35	—	—	—	—	176	EPR	8	9	NS311GF02C3BD7
	3/16	.49	0	—	—	75	20	—	—	—	—	176	EPR	8	9	NS311GF02C3BE1
	1/4	.85	0	—	—	50	20	—	—	—	—	176	EPR	8	9	NS311GF02C3BE7
9/32	1.0	0	—	—	35	15	—	—	—	—	176	EPR	8	9	NS311GF02C3BF1	

\* Class H Coil Recommended for Steam and Other High Temperature Applications

## Part Numbering

1	2	3	4	5	6	7	8	9	10	11	12	13	14
<b>N</b>	<b>S</b>	<b>3</b>	<b>1</b>	<b>1</b>	<b>G</b>	<b>F</b>	<b>0</b>	<b>2</b>	<b>C</b>	<b>3</b>	<b>B</b>	<b>C</b>	<b>1</b>
Series				Operating Mode	Housing*	Coil Class*	Voltage*		Seal Material	Body Material	Pipe Connection	Orifice Size	
NS31				1: Normally Closed	G: Conduit	F: Class F H: Class H	02: 120/60 110/50		C: EPR	3: Stainless Steel	B: 1/4" NPT	C1: 1/32" C3: 3/64" C5: 1/16" C7: 5/64" C9: 3/32" D3: 7/64" D5: 1/8" D7: 5/32" E1: 3/16" E7: 1/4" F1: 9/32"	
* See the "Engineering Guide" for additional voltages, variations and options													

## Coil Data

Coil Family		Frequency (Hz)		
Type	Size	60	50	
All	S3	Nominal Power (VA)		
		Inrush	36	36
		Holding	13	14

GC Valves Customer Service: 800-828-0484 (7:30am to 4pm ET) or 800-582-4232 (7:30am to 4pm PT)