

3/8" NPT Stainless Steel Body 2-Way Direct Acting Normally Closed

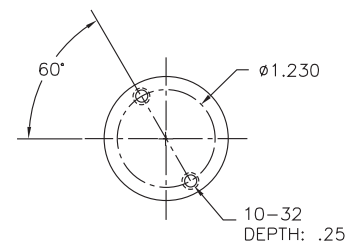
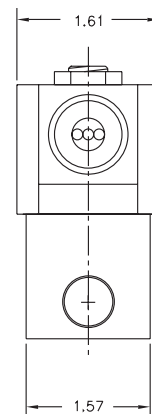
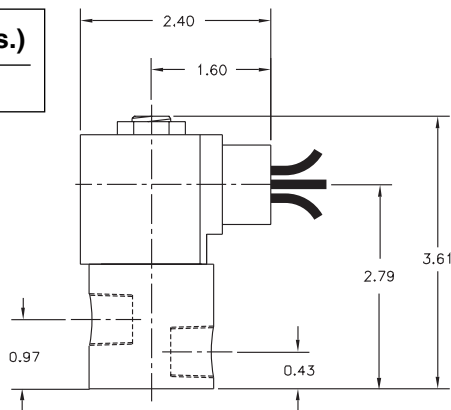


Materials	Seals:	NSF Approved EPDM
	Orifice:	Stainless Steel
Electrical	Standard Housing:	NEAM 4/4X Encapsulated - 1/2" Conduit
	Optional Housings:	Contact GC Valves Customer Service for available options.
	Standard Voltages:	24, 120, 240 AC 60 Hz; 50 Hz available 6, 12, 24 DC; Contact GC Valves Customer Service for Additional Voltages.
	Voltage Tolerance:	±10% of applicable voltage
	Coil Classes:	F, H, N
	Standard Lead Length:	24 inch
Operating Temperature	Ambient (Nominal):	32°F to 125°F
Mounting	Position:	Any
Approvals*	Agency:	NSF/ANSI - 61-G / NSF-372 / UR Recognized

* Not available for all variations

Dimensions/Weight

Weight (lbs.)
1.3

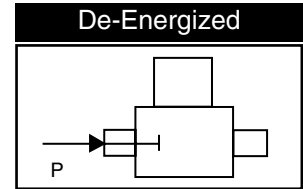
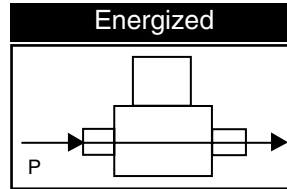
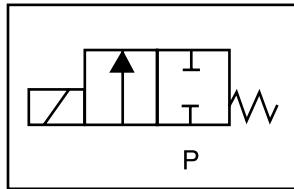




NS301 – 3/8" NPT, Stainless Steel Body, Normally Closed

Valve Selection List

Normally Closed



Pipe Size NPT	Orifice Size in.	C _v	Minimum	Operating Pressure Differential (psi)								Max Fluid Temp. °F	Seal Material	Power Consumption (Watts)		Model Code (120V/60HZ — 110V/50HZ Shown)
				Maximum										AC	DC	
				Air/Gas		Water		Light Oil		Steam*						
				AC	DC	AC	DC	AC	DC	AC	DC			AC	DC	Stainless Steel Body
3/8	1/8	.36	0	—	—	200	140	—	—	—	—	176	EPR	10	10	NS301GF02C3CD5
	3/16	.65	0	—	—	100	70	—	—	—	—	176	EPR	10	10	NS301GF02C3CE1
	1/4	.85	0	—	—	50	20	—	—	—	—	176	EPR	10	10	NS301GF02C3CE7
	9/32	1.0	0	—	—	35	15	—	—	—	—	176	EPR	10	10	NS301GF02C3CF1
	3/8	1.3	0	—	—	20	5	—	—	—	—	176	EPR	10	10	NS301GF02C3CF5

* Class H Coil Recommended for Steam and Other High Temperature Applications

Part Numbering

1	2	3	4	5	6	7	8	9	10	11	12	13	14
N	S	3	0	1	G	F	0	2	C	3	C	D	5
Series				Operating Mode	Housing*	Coil Class*	Voltage*		Seal Material	Body Material	Pipe Connection	Orifice Size	
NS30				1: Normally Closed	G: Conduit	F: Class F H: Class H	02: 120/60 110/50		C: EPR	3: Stainless Steel	C: 3/8" NPT	D5: 1/8" E1: 3/16" E7: 1/4" F1: 9/32" F5: 3/8"	
* See the "Engineering Guide" for additional voltages, variations and options													

Coil Data

Coil Family	
Type	Size
All	S4

Frequency (Hz)	60	50	
Nominal Power (VA)	Inrush	46	46
	Holding	18	19

GC Valves Customer Service: 800-828-0484 (7:30am to 4pm ET) or 800-582-4232 (7:30am to 4pm PT)