



SP91 Series



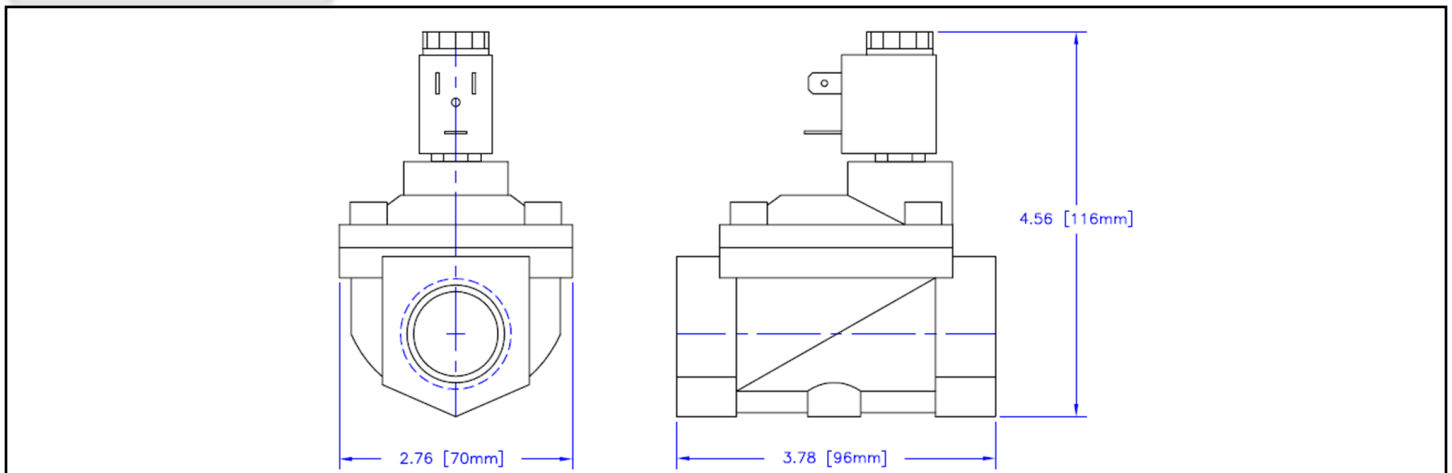
1" NPT Brass Forged Body 2-Way Piloted Diaphragm Normally Closed



Materials	Seals:	Nitrile
	Orifice:	Brass
Electrical	Standard Housing:	DIN 43650 Form B
	Optional Housings:	18" Leads
	Standard Voltages:	24, 120, 240AC 60Hz; 50Hz available; 12, 24 DC; Contact GC Valves Customer Service for Additional Voltages.
	Voltage Tolerance:	±10% of applicable voltage
	Coil Class:	H
Operating Temperature	Ambient (Nominal):	32°F to 125°F
Mounting	Position:	Any
Approvals*	Agencies:	cURus, CE

*Not Available for all variations

Dimensions



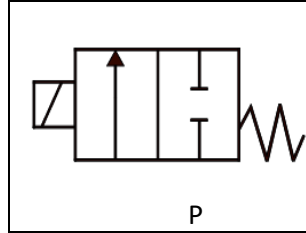


SP911-1" NPT, Forged Brass, Normally Closed

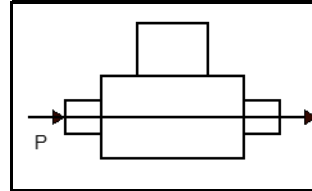


Valve Selection List

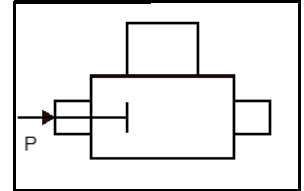
Normally Closed



Energized



De-Energized



Pipe Size	Orifice Size	Cv	Operating Pressure Differential (PSI)					Max. Fluid Temp.	Seal Material	Power Consumption		Model Code (24V/60HZ - DIN) Shown
			Min.	Maximum						AC : vA DC : Watts		
				Air/Gas		Water						
NPT	mm.		AC	DC	AC	DC	°F		AC	DC	Forged Brass Body	
1"												
	25	12	8	200	200	200	200	180	Nitrile	6.5	4	SP911YN24MJFA5
	25	12	8	200	200	200	200	180	Nitrile	6.5	4	SP911YN24NJFA5
	25	12	8	200	200	200	200	230	FKM	6.5	4	SP911YN24VJFA5
	25	12	8	200	200	200	200	295	EPDM	6.5	4	SP911YN24CJFA5

Part Numbering

1	2	3	4	5	6	7	8	9	10	11	12	13	14
S	P	9	1	1	Y	N	2	4	M	J	F	A	5
Series			Stations	Operating Mode	Housing	Coil	Voltage		Seal Material	Body Material	Pipe Size	Orifice Size	
C9 Piloted NPT Threads			1	1: 2Way N.C.	Y: DIN G: Leads	N: H Class	02: 120/60 04: 240/60 24: 24/60 15: 12 VDC 16: 24 VDC		M: Nitrile/FKM N: Nitrile V: FKM C: EPDM	J: Brass	F: 1"	25mm	



SP911-1" NPT, Forged Brass, Normally Closed



Coil Data

AC Coil Family	
Voltage Code	Coil Number
YN02	C944
GN02	C944L
YN04	C945
GN04	C945L
YN24	C987
GN24	C987L

DC Coil Family	
Voltage Code	Coil Number
YN15	C999
GN15	C999L
YN16	C926
GN16	C926L

Kit Data

Operator	
Seal	Part Number
N	KSC9102NBA5
V	KSC9102VBA5
C	KSC9102CBA5

Rebuild Kit	
Seal	Part Number
N	KSP9102NJF
V	KSP9102VJF
C	KSP9102CJF