

## Table of Contents

- Page 1 – General Overview
- Page 2 – Valve Specifications
- Page 3 – Part Number Selection
- Page 4 – Drawing

## Construction

Wetted Components		
Body	303 SS	Brass
Operator Tube	303 Stainless Steel	
Plunger & Tube Head	IJ117	
Springs	304 Stainless Steel	
Shading Ring	Copper	
Seals	FKM	



## Coil Enclosures

- G Coil - 18" Lead Wires (IP65)
- Y Coil – DIN Form A – 18mm (IP65)

## Electrical

Series	Power Consumption	
	DC (watts)	AC (watts)
SC4	10	8

- All Coils Rated for 100% Duty Cycle
- Voltage Tolerance:  $\pm 10\%$  from nominal

## Ambient Temperature (Nominal)

- 32°F to 140°F (0°C to 60°C)

## Fluid Temperature by Seal Material

- FKM: -20°F to 230°F (-29°C to 110°C)

## Approvals

- cURus (MH17997)
- CE Certified



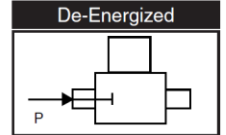
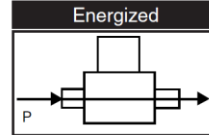
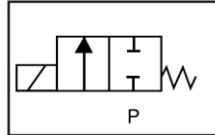


2-Way • Normally Closed • 1/4" & 3/8" NPT  
**SC4 Series Manifold Valves**  
 2 - 6 Stations • Direct Acting • Stainless Steel & Brass

**Normally Closed Manifold Specifications (Closed when de-energized)**

Pipe Size (NPT)	Orifice Size (mm)	Flow Factor (Cv)	Operating Pressure Differential (PSI)			Part Number <sup>①</sup> (Shown as 2-Station with 120 VAC DIN Coil)	
			Min.	Maximum		Stainless Steel	Brass
				Air/Gas & Liquid			
				AC	DC		
1/4 X 1/4	1.0	0.05	0	1085	802	SC421YH02VDBA1	SC421YH02VKBA1
	1.2	0.08	0	1015	735	SC421YH02VDBA2	SC421YH02VKBA2
	1.6	0.12	0	870	362	SC421YH02VDBA3	SC421YH02VKBA3
	2.0	0.18	0	580	290	SC421YH02VDBA4	SC421YH02VKBA4
	2.4	0.25	0	435	217	SC421YH02VDBA5	SC421YH02VKBA5
	3.0	0.32	0	261	145	SC421YH02VDBA6	SC421YH02VKBA6
3/8 X 1/4	1.0	0.05	0	1085	802	SC421YH02VDTA1	SC421YH02VKTA1
	1.2	0.08	0	1015	735	SC421YH02VDTA2	SC421YH02VKTA2
	1.6	0.12	0	870	362	SC421YH02VDTA3	SC421YH02VKTA3
	2.0	0.18	0	580	290	SC421YH02VDTA4	SC421YH02VKTA4
	2.4	0.25	0	435	217	SC421YH02VDTA5	SC421YH02VKTA5
	3.0	0.32	0	261	145	SC421YH02VDTA6	SC421YH02VKTA6

① See part number selection guide for additional voltages and variations.  
 2. MRP = 5X MOPD





# 2-Way • Normally Closed • 1/4" & 3/8" NPT SC4 Series Manifold Valves

2 - 6 Stations • Direct Acting • Stainless Steel & Brass

## SC4 Series Manifold Part Number Selection

Valve Series	Number of Stations	Operating Mode	Coil Housing	Coil Class	Voltage	Seal Material	Body Material/Pipe Size	Orifice Size
①	②	③	④	⑤	⑥	⑦	⑧	⑨
<b>SC4</b>	<b>2</b>	<b>1</b>	<b>Y</b>	<b>H</b>	<b>02</b>	<b>V</b>	<b>KB</b>	<b>A6</b>

① **Valve Series**

<b>SC4</b>	Direct Acting
------------	---------------

⑦ **Seal Material**

<b>V</b>	FKM
----------	-----

② **Number of Stations**

<b>2</b>	Two Stations
<b>3</b>	Three Stations
<b>4</b>	Four Stations
<b>5</b>	Five Stations
<b>6</b>	Six Stations

⑧ **Body Material/Pipe Size (Inlet X Outlet)**

<b>KB</b>	Brass, 1/4" X 1/4" NPT
<b>KT</b>	Brass, 3/8" X 1/4" NPT
<b>DB</b>	303 Stainless Steel, 1/4" X 1/4" NPT
<b>DT</b>	303 Stainless Steel, 3/8" X 1/4" NPT

③ **Operating Mode**

<b>1</b>	2-Way Normally Closed (NC)
----------	----------------------------

⑨ **Orifice Size**

<b>A1</b>	1.0 mm
<b>A2</b>	1.2 mm
<b>A3</b>	1.6 mm
<b>A4</b>	2.0 mm
<b>A5</b>	2.4 mm
<b>A6</b>	3.0 mm (Standard)

④ **Coil Type**

<b>G</b>	18" Lead Wires
<b>Y</b>	DIN (Form 8 – 18mm)

⑤ **Coil Class**

<b>H</b>	H Class Coil
----------	--------------

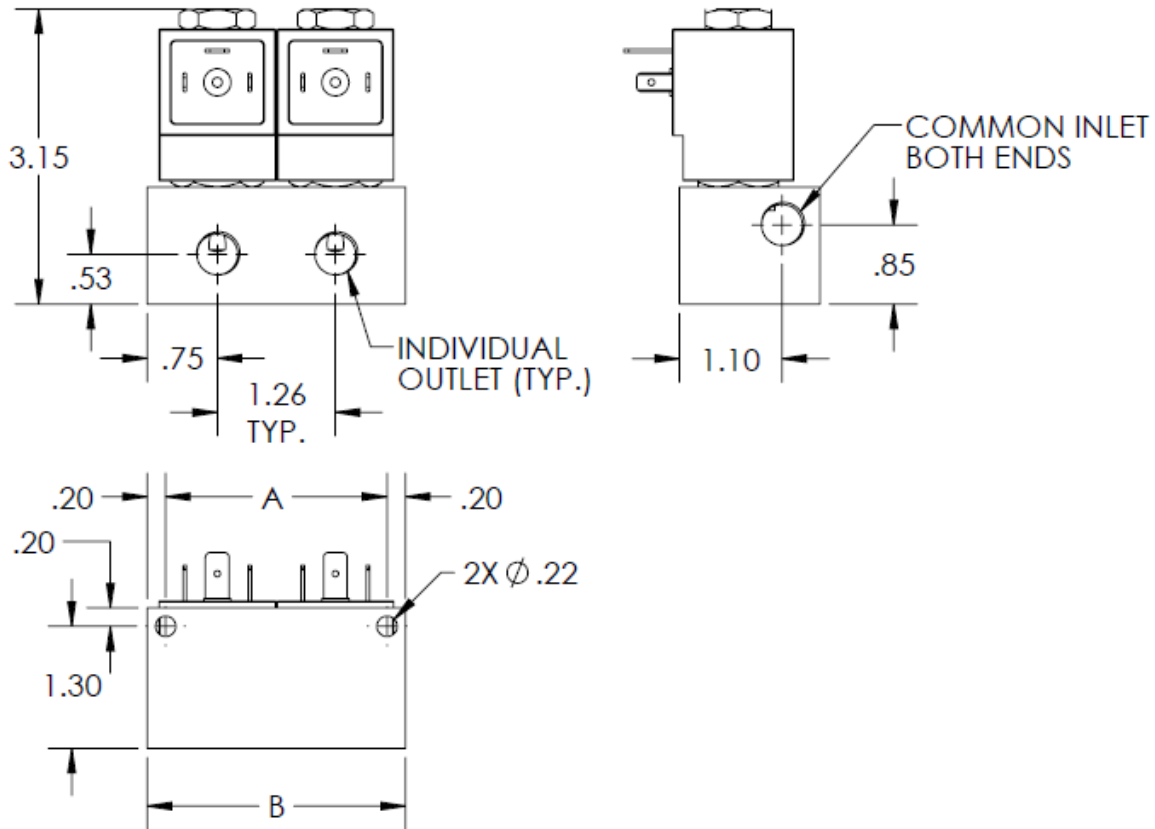
⑩ **Optional Suffix**

<b>(blank)</b>	No Option
<b>N</b>	Cleaned for Oxygen Service
<b>P</b>	Nickel Plated Plunger & Tube

⑥ **Voltage**

<b>02</b>	120 VAC, 60 Hz; 110 VAC, 50 Hz
<b>03</b>	208 VAC, 60 Hz
<b>04</b>	240 VAC, 60 Hz; 220 VAC, 50 Hz
<b>24</b>	24 VAC, 50/60 Hz
<b>15</b>	12 VDC
<b>16</b>	24 VDC

Drawing 1 - SC4 Series Manifold



Pipe Size (NPT)	Series/ # of Stations	A	B
1/4" INLET X 1/4" OUTLET	SC42	2.36	2.76
	SC43	3.62	4.02
	SC44	4.88	5.28
	SC45	6.14	6.54
	SC46	7.40	7.80
3/8" INLET X 1/4" OUTLET	SC42	2.36	2.76
	SC43	3.62	4.02
	SC44	4.88	5.28
	SC45	6.14	6.54
	SC46	7.40	7.80

Weight
1.5 lb
2.5 lb
3.5 lb
4.5 lb
5.5 lb
1.4 lb
2.4 lb
3.4 lb
4.4 lb
5.4 lb

- SC4 series manifold valves can be mounted in any position.
- Dimensions shown in inches.
- Drawing not to scale.