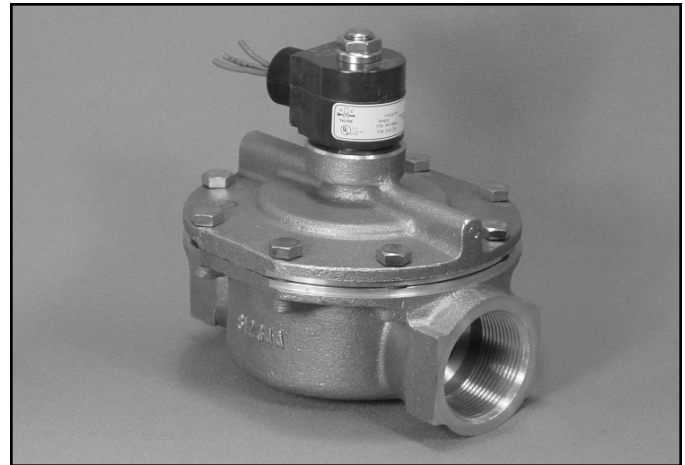


- High Performance
- 1 1/2" NPT
- Stainless Steel Body  
Type 316
- 2-Way Piloted  
Diaphragm
- Normally Open



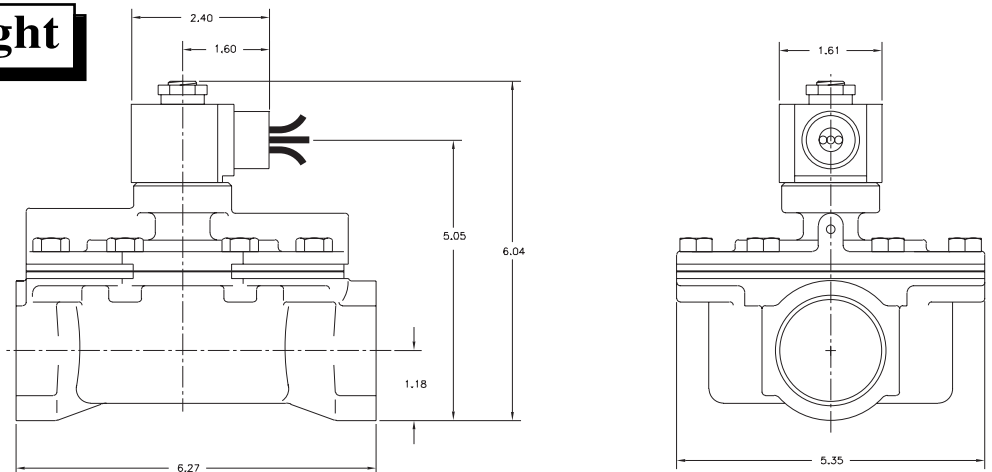
|                       |                        |   |
|-----------------------|------------------------|---|
| Materials             | Seals:                 | Nitrile, Teflon®  |
|                       | Orifice: Pilot<br>Main | Stainless Steel<br>Stainless Steel Ø 1 1/2"   |
| Electrical            | Standard Housing:      | Encapsulated Waterproof Conduit (NEMA 4/4X)   |
|                       | Optional Housings:     | Metallic Conduit, Explosion-proof (NEMA 7), Grommet, Open Frame, Junction Box (single or dual knockouts), DIN; Contact GC Valves Customer Service for others. |
|                       | Standard Voltages:     | 24, 120, 240 AC 60 Hz; 50 Hz available<br>6, 12, 24 DC;<br>Contact GC Valves Customer Service for Additional Voltages.  |
|                       | Voltage Tolerance:     | ±10% of applicable voltage  |
|                       | Coil Classes:          | F, H, N   |
|                       | Standard Lead Length:  | 24 inch   |
| Operating Temperature | Ambient (Nominal):     | 32°F to 125°F   |
| Mounting              | Position:              | ±15° From Vertical  |
| Approvals*            | Agency:                | UL Listed, UL Recognized, CSA Approved  |

\* Not available for all variations

® Registered Trademark of DuPont Co.

## Dimensions/Weight

|                      |
|----------------------|
| <b>Weight (lbs.)</b> |
| 10.5                 |

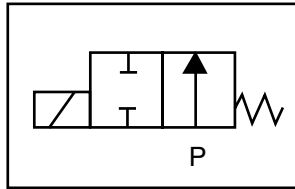




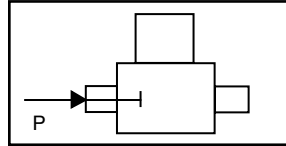
# S212 – High Performance, 1 1/2" NPT, Stainless Steel Body-Type 316, Normally Open

## Valve Selection List

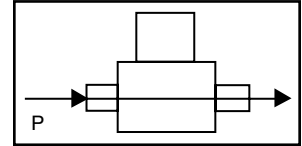
Normally Open



Energized



De-Energized



| Pipe Size<br>NPT | Orifice Size<br>IN | C <sub>v</sub> | Minimum | Operating Pressure Differential (psi) |     |       |     |           |     |        |      | Max<br>Fluid Temp.<br>°F | Seal Material | Power Consumption (Watts) |    | Model Code<br>( 120V/60HZ — 110V/50HZ<br>Shown ) |
|------------------|--------------------|----------------|---------|---------------------------------------|-----|-------|-----|-----------|-----|--------|------|--------------------------|---------------|---------------------------|----|--|
|                  |                    |                |         | Maximum                               |     |       |     |           |     |        |      |                          |               | AC                        | DC |  |
|                  |                    |                |         | Air/Gas                               |     | Water |     | Light Oil |     | Steam* |      |                          |               |                           |    |  |
|                  |                    |                |         | AC                                    | DC  | AC    | DC  | AC        | DC  | AC     | DC   |                          |               | AC                        | DC |  |
| 1 1/2            | 1 1/2              | 28             | 10      | 200                                   | 140 | 200   | 140 | 200       | 140 | —      | —    | 180                      | Nitrile       | 8                         | 9  | S212GF02N1HJ5                                    |
|                  | 1 1/2              | 28             | 10      | —                                     | —   | —     | —   | —         | —   | 100*   | 100* | 366                      | Teflon        | 8                         | 9  | S212GH02T1HJ5                                    |

\* Class H Coil Recommended for Steam and Other High Temperature Applications

## Part Numbering

| 1  | 2        | 3        | 4                | 5          | 6                        | 7                    | 8        | 9                               | 10                 | 11              | 12           | 13       |
|--|----------|----------|------------------|------------|--------------------------|----------------------|----------|---------------------------------|--------------------|-----------------|--------------|----------|
| <b>S</b>   | <b>2</b> | <b>1</b> | <b>2</b>         | <b>G</b>   | <b>F</b>                 | <b>0</b>             | <b>2</b> | <b>N</b>                        | <b>1</b>           | <b>H</b>        | <b>J</b>     | <b>5</b> |
| Series   |          |          | Operating Mode   | Housing*   | Coil Class*              | Voltage*             |          | Seal Material                   | Body Material      | Pipe Connection | Orifice Size |          |
| S21  |          |          | 2: Normally Open | G: Conduit | F: Class F<br>H: Class H | 02: 120/60<br>110/50 |          | N: Nitrile<br>T: Teflon/<br>EPR | 1: Stainless Steel | H: 1 1/2" NPT   | J5: 1 1/2"   |          |
| * See the "Engineering Guide" for additional voltages, variations and options. |          |          |                  |            |                          |                      |          |                                 |                    |                 |              |          |

## Coil Data

| Coil Family |      |
|-------------|------|
| Type        | Size |
| All         | S3   |

|                    |         |    |
|--------------------|---------|----|
| Frequency (Hz)     | 60      | 50 |
| Nominal Power (VA) | Inrush  | 36 |
|                    | Holding | 22 |

GC Valves Customer Service: 800-828-0484 (7:30am to 4pm ET) or 800-582-4232 (7:30am to 4pm PT)