

S20 Series



- 1/2" NPT
- Nylon Body
- 2-Way Zero Differential
Piloted Diaphragm
- Normally Closed

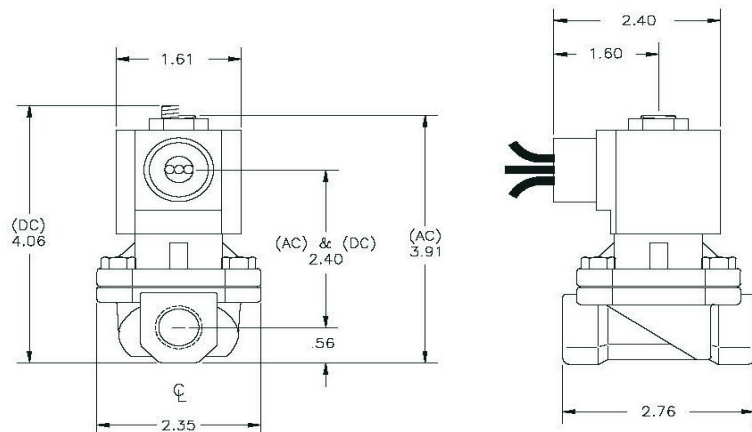


| | | |
|-----------------------|-----------------------|--|
| Materials | Seals: | Nitrile, FKM, Ethylene Propylene |
| | Orifice: | Pilot Main |
| Electrical | Standard Housing: | Encapsulated Waterproof Conduit (NEMA 4X) |
| | Optional Housings: | Metal Conduit, Explosion-Proof (NEMA 7), Grommet Open Frame, Junction Box (single or dual knockouts), DIN, Contact GC Valves Customer Svc. For others. |
| | Standard Voltages: | 24, 120, 240, AC, 60 and/or 50 Hz. Available 6, 12, 24 DC Contact GC Valves Customer Svc. For Additional Voltages |
| | Voltage Tolerance: | ± 10% of applicable voltage |
| | Coil Classes: | F, H, N |
| | Standard Lead Length: | 24 inches |
| Operating Temperature | Ambient (Nominal): | 32° F to 125° F |
| Mounting | Position: | Any |
| Approvals* | Agency: | UL Recognized, CSA Approved, CE Certified |

* Not available for all variations

Dimensions / Weight

| |
|---------------------|
| Weight (oz.) |
| 14.81/2 |



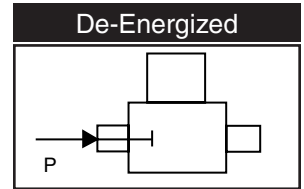
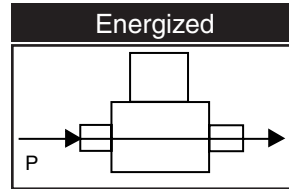
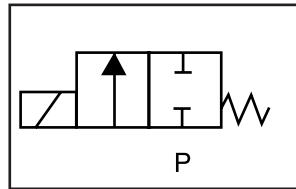
GC Valves Customer Service: 800-828-0484 (7:30 AM to 4500 PM ET)



S201 – 1/2" NPT, Nylon Body, Normally Closed

Valve Selection List

Normally Closed



| Pipe Size | Orifice Size | C _v | Minimum | Operating Pressure Differential (psi) | | | | Max Fluid Temp. °F | Seal Material | Power Consumption (Watts) | | Model Code (120V/60HZ — 110V/50HZ Shown) | |
|-----------|--------------|----------------|---------|---------------------------------------|----|-------|----|-----------------------|---------------|---------------------------|----|--|----|
| | | | | Maximum | | | | | | AC | DC | | AC |
| | | | | Air/Gas | | Water | | | | | | | |
| | | | | AC | DC | AC | DC | | | Noryl Body | | | |
| 1/2 | 5/8 | 4.3 | 0 | 140 | 90 | 100 | 50 | 295 | EPR | 10 | 10 | S201GF02CPDG4 | |
| | 5/8 | 4.3 | 0 | 140 | 90 | 140 | 90 | 180 | Nitrile | 10 | 10 | S201GF02NPDG4 | |
| | 5/8 | 4.3 | 0 | 140 | 90 | 140 | 90 | 230 | Viton | 10 | 10 | S201GF02VPDG4 | |

Part Numbering

| 1 | 2 | 3 | 4 | 5 | 6 | 7 | 8 | 9 | 10 | 11 | 12 | 13 |
|--|----------|----------|--------------------|------------|-------------|----------------------|----------|----------------------------------|---------------|-----------------|--------------|----------|
| S | 2 | 0 | 1 | G | F | 0 | 2 | C | P | D | G | 4 |
| Series | | | Operating Mode | Housing* | Coil Class* | Voltage* | | Seal Material | Body Material | Pipe Connection | Orifice Size | |
| S20 | | | 1: Normally Closed | G: Conduit | F: Class F | 02: 120/60 110/50 | | C: EPR N: Nitrile V: Viton | P: Nylon | D: 1/2" NPT | G4: 5/8" | |
| * See the "Engineering Guide" for additional voltages, variations and options. | | | | | | | | | | | | |

Coil Data

| Coil Family | |
|-------------|------|
| Type | Size |
| All | S4 |

| | | |
|--------------------|---------|----|
| Frequency (Hz) | 60 | 50 |
| Nominal Power (VA) | Inrush | 46 |
| | Holding | 18 |

GC Valves Customer Service: 800-828-0484 (7:30 am to 5:00 pm ET)