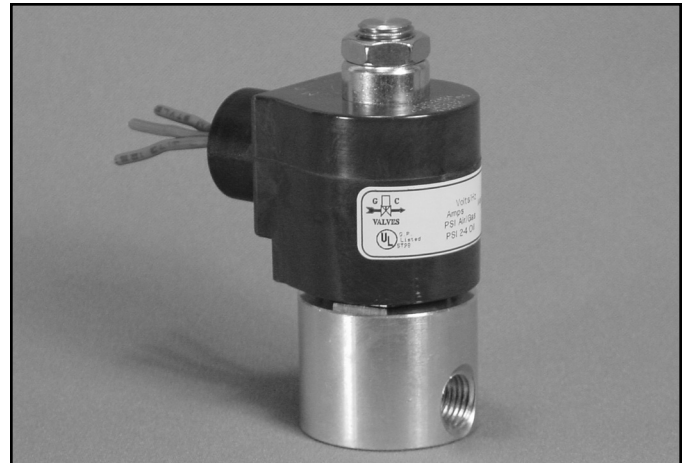


1/4" NPT Brass Body 2-Way Direct Acting Normally Open



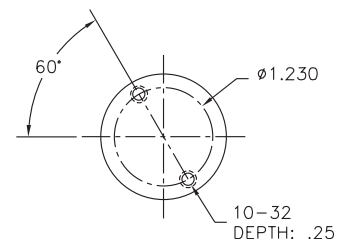
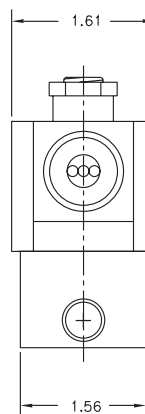
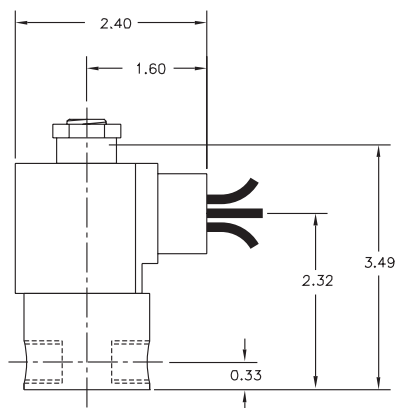
Materials	Seals:	Nitrile, Viton®, Ethylene Propylene, Teflon®, Rulon
	Orifice:	Stainless Steel
Electrical	Standard Housing:	Encapsulated Waterproof Conduit (NEMA 4/4X)
	Optional Housings:	Metallic Conduit, Explosion-proof (NEMA 7), Grommet, Open Frame, Junction Box (single or dual knockouts), DIN; Contact GC Valves Customer Service for others.
	Standard Voltages:	24, 120, 240 AC 60 Hz; 50 Hz available 6, 12, 24 DC; Contact GC Valves Customer Service for Additional Voltages.
	Voltage Tolerance:	±10% of applicable voltage
	Coil Classes:	F, H, N
	Standard Lead Length:	24 inch
Operating Temperature	Ambient (Nominal):	32°F to 125°F
Mounting	Position:	Any
Approvals*	Agency:	UL Listed, UL Recognized, CSA Approved

* Not available for all variations

© Registered Trademark of DuPont Co.

Dimensions/Weight

Weight (lbs.)
1.1



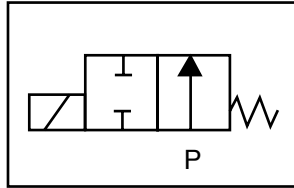
GC Valves Customer Service: 800-828-0484 (7:30am to 4pm ET) or 800-582-4232 (7:30am to 4pm PT)



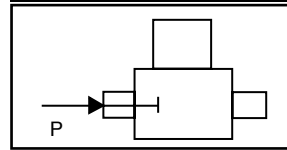
S302 – 1/4" NPT, Brass Body, Normally Open

Valve Selection List

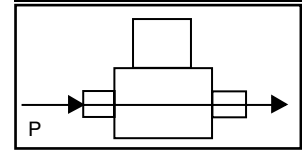
Normally Open



Energized



De-Energized



Pipe Size NPT	Orifice Size in.	C _v	Operating Pressure Differential (psi)								Max Fluid Temp. °F	Seal Material	Power Consumption (Watts)		Model Code (120V/60HZ — 110V/50HZ Shown)			
			Maximum										AC	DC				
			Air/Gas		Water		Light Oil		Steam*									
			AC	DC	AC	DC	AC	DC	AC	DC			AC	DC	Brass Body			
1/4	1/32	.03	0	2400	2400	2400	2400	2400	2400	—	—	150*	150*	295	EPR	11	10	S302GF02C8BC1
	3/64	.05	0	600	600	600	600	600	600	—	—	150*	150*	295	EPR	11	10	S302GF02C8BC3
	1/16	.10	0	325	325	325	325	325	325	—	—	150*	150*	295	EPR	11	10	S302GF02C8BC5
	5/64	.15	0	235	235	235	235	235	235	—	—	150*	150*	295	EPR	11	10	S302GF02C8BC7
	3/32	.20	0	150	150	150	150	150	150	—	—	150*	150*	295	EPR	11	10	S302GF02C8BC9
	7/64	.25	0	125	125	125	125	125	125	—	—	125*	125*	295	EPR	11	10	S302GF02C8BD3
	1/8	.30	0	100	100	100	100	100	100	—	—	100*	100*	295	EPR	11	10	S302GF02C8BD5
	5/32	.43	0	60	60	60	60	60	60	—	—	60*	60*	295	EPR	11	10	S302GF02C8BD7
3/16	.65	0	40	40	40	40	40	40	—	—	40*	40*	295	EPR	11	10	S302GF02C8BE1	
1/4	1/32	.03	0	2400	2400	2400	2400	2400	2400	—	—	180	—	180	Nitrile	11	10	S302GF02N8BC1
	3/64	.05	0	600	600	600	600	600	600	—	—	180	—	180	Nitrile	11	10	S302GF02N8BC3
	1/16	.10	0	325	325	325	325	325	325	—	—	180	—	180	Nitrile	11	10	S302GF02N8BC5
	5/64	.15	0	235	235	235	235	235	235	—	—	180	—	180	Nitrile	11	10	S302GF02N8BC7
	3/32	.20	0	150	150	150	150	150	150	—	—	180	—	180	Nitrile	11	10	S302GF02N8BC9
	7/64	.25	0	125	125	125	125	125	125	—	—	180	—	180	Nitrile	11	10	S302GF02N8BD3
	1/8	.30	0	100	100	100	100	100	100	—	—	180	—	180	Nitrile	11	10	S302GF02N8BD5
	5/32	.43	0	60	60	60	60	60	60	—	—	180	—	180	Nitrile	11	10	S302GF02N8BD7
3/16	.65	0	40	40	40	40	40	40	—	—	180	—	180	Nitrile	11	10	S302GF02N8BE1	
1/4	1/32	.03	0	2400	2400	2400	2400	2400	2400	—	—	230	—	230	Viton	11	10	S302GF02V8BC1
	3/64	.05	0	600	600	600	600	600	600	—	—	230	—	230	Viton	11	10	S302GF02V8BC3
	1/16	.10	0	325	325	325	325	325	325	—	—	230	—	230	Viton	11	10	S302GF02V8BC5
	5/64	.15	0	235	235	235	235	235	235	—	—	230	—	230	Viton	11	10	S302GF02V8BC7
	3/32	.20	0	150	150	150	150	150	150	—	—	230	—	230	Viton	11	10	S302GF02V8BC9
	7/64	.25	0	125	125	125	125	125	125	—	—	230	—	230	Viton	11	10	S302GF02V8BD3
	1/8	.30	0	100	100	100	100	100	100	—	—	230	—	230	Viton	11	10	S302GF02V8BD5
	5/32	.43	0	60	60	60	60	60	60	—	—	230	—	230	Viton	11	10	S302GF02V8BD7
3/16	.65	0	40	40	40	40	40	40	—	—	230	—	230	Viton	11	10	S302GF02V8BE1	

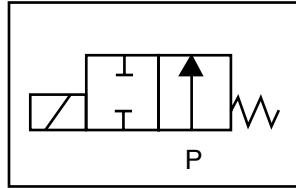
* Class H Coil Recommended for Steam and Other High Temperature Applications

S302 – 1/4" NPT, Brass Body, Normally Open

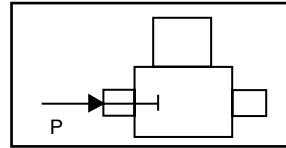


Valve Selection List

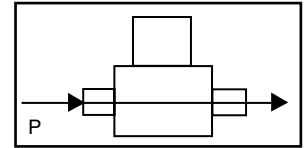
Normally Open



Energized



De-Energized



Pipe Size NPT	Orifice Size in.	C _v	Minimum	Operating Pressure Differential (psi)								Max Fluid Temp. °F	Seal Material	Power Consumption (Watts)		Model Code (120V/60HZ — 110V/50HZ Shown)
				Maximum										AC	DC	
				Air/Gas		Water		Light Oil		Steam*						
				AC	DC	AC	DC	AC	DC	AC	DC			AC	DC	Brass Body
1/4	1/32	.03	0	2400	2400	2400	2400	2400	2400	150*	150*	366	Rulon	11	10	S302GF02R8BC1
	3/64	.05	0	600	600	600	600	600	600	150*	150*	366	Rulon	11	10	S302GF02R8BC3
	1/16	.10	0	325	325	325	325	325	325	150*	150*	366	Rulon	11	10	S302GF02R8BC5
	7/64	.15	0	235	235	235	235	235	235	150*	150*	366	Rulon	11	10	S302GF02R8BC7
	3/32	.20	0	150	150	150	150	150	150	150*	150*	366	Rulon	11	10	S302GF02R8BC9
	7/64	.25	0	125	125	125	125	125	125	125*	125*	366	Rulon	11	10	S302GF02R8BD3
	1/8	.30	0	100	100	100	100	100	100	100*	100*	366	Rulon	11	10	S302GF02R8BD5
	5/32	.43	0	60	60	60	60	60	60	60*	60*	366	Rulon	11	10	S302GF02R8BD7
3/16	.65	0	40	40	40	40	40	40	40*	40*	366	Rulon	11	10	S302GF02R8BE1	
1/4	1/32	.03	0	2400	2400	2400	2400	2400	2400	150*	150*	366	Teflon	11	10	S302GF02T8BC1
	3/64	.05	0	600	600	600	600	600	600	150*	150*	366	Teflon	11	10	S302GF02T8BC3
	1/16	.10	0	325	325	325	325	325	325	150*	150*	366	Teflon	11	10	S302GF02T8BC5
	5/64	.15	0	235	235	235	235	235	235	150*	150*	366	Teflon	11	10	S302GF02T8BC7
	3/32	.20	0	150	150	150	150	150	150	150*	150*	366	Teflon	11	10	S302GF02T8BC9
	7/64	.25	0	125	125	125	125	125	125	125*	125*	366	Teflon	11	10	S302GF02T8BD3
	1/8	.30	0	100	100	100	100	100	100	100*	100*	366	Teflon	11	10	S302GF02T8BD5
	5/32	.43	0	60	60	60	60	60	60	60*	60*	366	Teflon	11	10	S302GF02T8BD7
3/16	.65	0	40	40	40	40	40	40	40*	40*	366	Teflon	11	10	S302GF02T8BE1	

* Class H Coil Recommended for Steam and Other High Temperature Applications



S302 – 1/4" NPT, Brass Body, Normally Open

Part Numbering

1	2	3	4	5	6	7	8	9	10	11	12	13
S	3	0	2	G	F	0	2	C	8	B	C	1
Series			Operating Mode	Housing*	Coil Class*	Voltage*		Seal Material	Body Material	Pipe Connection	Orifice Size	
S30			2: Normally Open	G: Conduit	F: Class F H: Class H	02: 120/60 110/50		C: EPR N: Nitrile V: Viton R: Rulon T: Teflon	8: Brass	B: 1/4" NPT	C1: 1/32" C3: 3/64" C5: 1/16" C9: 3/32" D5: 1/8" E1: 3/16"	
* See the "Engineering Guide" for additional voltages, variations and options.												

Coil Data

Coil Family	
Type	Size
All	S4

Frequency (Hz)	60	50
Nominal Power (VA)	Inrush	46
	Holding	22