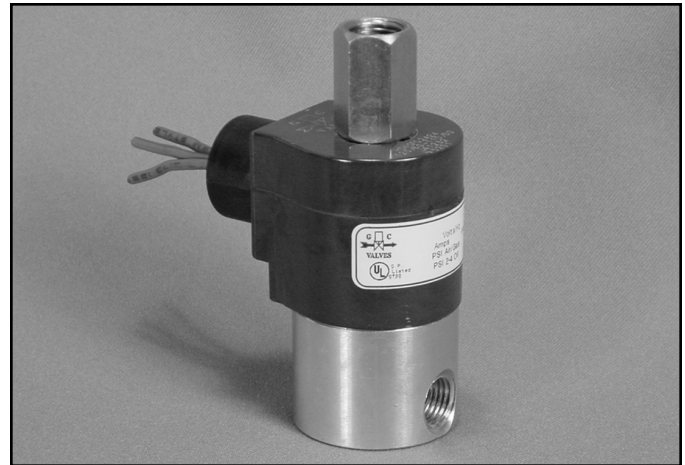


S30 Series



- 1/4" NPT
- Brass Body
- 3-Way Direct Acting
- Normally Open



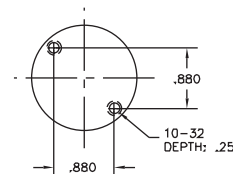
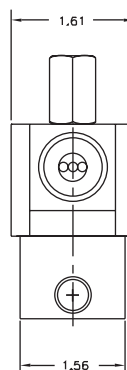
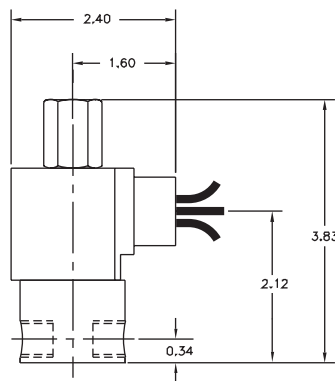
Materials	Seals:	Nitrile, Viton®, Ethylene Propylene or Teflon®
	Orifices: Top Main	Stainless Steel Brass
Electrical	Standard Housing:	Encapsulated Waterproof Conduit (NEMA 4/4X)
	Optional Housings:	Metallic Conduit, Explosion-proof (NEMA 7), Grommet, Open Frame, Junction Box (single or dual knockouts), DIN; Contact GC Valves Customer Service for others.
	Standard Voltages:	24, 120, 240 AC 60 Hz; 50 Hz available 6, 12, 24 DC; Contact GC Valves Customer Service for Additional Voltages.
	Voltage Tolerance:	±10% of applicable voltage
	Coil Classes:	F, H, N
	Standard Lead Length:	24 inch
Operating Temperature	Ambient (Nominal):	32° to 125°F
Mounting	Position	Any
Approvals*	Agency	UL Listed, UL Recognized, CSA Approved

* Not available for all variations

® Registered Trademark of DuPont Co.

Dimensions/Weight

Weight (lbs.)
1.2



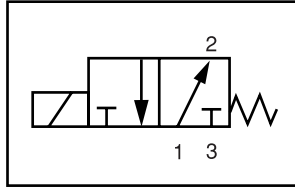
GC Valves Customer Service: 800-828-0484 (7:30am to 4pm ET) or 800-582-4232 (7:30am to 4pm PT)



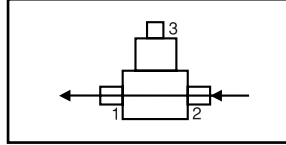
S304 – 1/4" NPT, Brass Body, Normally Open

Valve Selection List

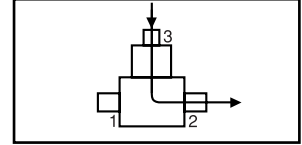
Normally Open



Energized



De-Energized



Pipe Size NPT	Orifice Size IN		C _v		Operating Pressure Differential (psi)						Max Fluid Temp. °F	Seal Material	Power Consumption (Watts)		Model Code (120V/60HZ — 110V/50HZ Shown)
	Main	Top	Main	Top	Maximum								AC	DC	
					Air/Gas		Water		Light Oil						
	AC	DC	AC	DC	AC	DC	AC	DC	AC	DC					
1/4	3/64	3/64	.05	.05	150	150	150	150	—	—	295	EPR	10	10	S304GF02C8AC3
	3/64	1/16	.05	.10	150	120	150	120	—	—	295	EPR	10	10	S304GF02C8BV1
	1/16	1/16	.08	.10	125	120	125	120	—	—	295	EPR	10	10	S304GF02C8BC5
	3/32	3/32	.18	.23	75	25	75	25	—	—	295	EPR	10	10	S304GF02C8BC9
	5/32	3/32	.41	.23	75	20	75	20	—	—	295	EPR	10	10	S304GF02C8BV7
1/4	3/64	3/64	.05	.05	150	150	150	150	150	150	180	Nitrile	10	10	S304GF02N8AC3
	3/64	1/16	.05	.10	150	120	150	120	150	120	180	Nitrile	10	10	S304GF02N8BV1
	1/16	1/16	.08	.10	125	120	125	120	125	120	180	Nitrile	10	10	S304GF02N8BC5
	3/32	3/32	.18	.23	75	25	75	25	75	25	180	Nitrile	10	10	S304GF02N8BC9
	5/32	3/32	.41	.23	75	20	75	20	75	20	180	Nitrile	10	10	S304GF02N8BV7
1/4	3/64	3/64	.05	.05	150	150	150	150	150	150	230	Viton	10	10	S304GF02V8AC3
	3/64	1/16	.05	.10	150	120	150	120	150	120	230	Viton	10	10	S304GF02V8BV1
	1/16	1/16	.08	.10	125	120	125	120	125	120	230	Viton	10	10	S304GF02V8BC5
	3/32	3/32	.18	.23	75	25	75	25	75	25	230	Viton	10	10	S304GF02V8BC9
	5/32	3/32	.41	.23	75	20	75	20	75	20	230	Viton	10	10	S304GF02V8BV7
1/4	3/64	3/64	.05	.05	150	150	150	150	150	150	366*	Teflon	10	10	S304GF02T8AC3
	3/64	1/16	.05	.10	150	120	150	120	150	120	366*	Teflon	10	10	S304GF02T8BV1
	1/16	1/16	.08	.10	125	120	125	120	125	120	366*	Teflon	10	10	S304GF02T8BC5
	3/32	3/32	.18	.23	75	25	75	25	75	25	366*	Teflon	10	10	S304GF02T8BC9
	5/32	3/32	.41	.23	75	20	75	20	75	20	366*	Teflon	10	10	S304GF02T8BV7

* Class H Coil Recommended for High Temperature Applications

GC Valves Customer Service: 800-828-0484 (7:30am to 4pm ET) or 800-582-4232 (7:30am to 4pm PT)

S304 – 1/4" NPT, Brass Body, Normally Open



Part Numbering

1	2	3	4	5	6	7	8	9	10	11	12	13
S	3	0	4	G	F	0	2	C	8	B	C	3
Series			Operating Mode	Housing*	Coil Class*	Voltage*		Seal Material	Body Material	Pipe Connection	Orifice Size (Main x Top)	
S30			4: Normally Open	G: Conduit	F: Class F	02: 120/60 110/50		C: EPR N: Nitrile V: Viton T: Teflon	8: Brass	B: 1/4" NPT	C3: 3/64" x 3/64" V1: 3/64" x 1/16" C5: 1/16" x 1/16" C9: 3/32" x 3/32" V7: 5/32" x 3/32"	
* See the "Engineering Guide" for additional voltages, variations and options.												

Coil Data

Coil Family	
Type	Size
All	S4

Frequency (Hz)	60	50
Nominal Power (VA)	Inrush	46
	Holding	20
		23



S304 – 1/4" NPT, Brass Body, Normally Open

This Page Intentionally Blank