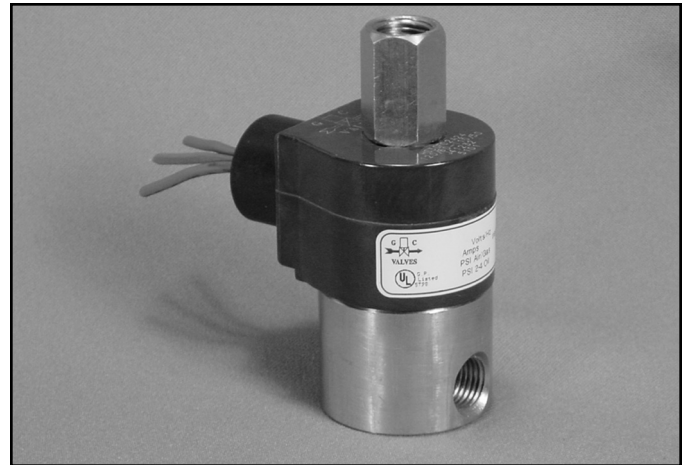


# S31 Series



- 1/4" NPT
- Stainless Steel Body
- 3-Way Direct Acting
- Normally Open



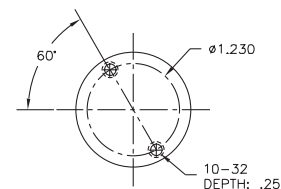
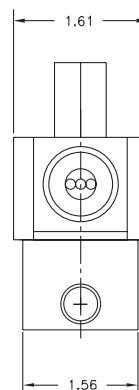
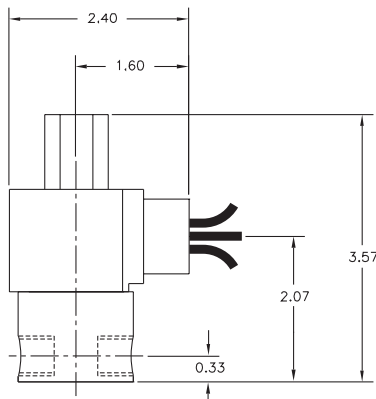
Materials	Seals:	Nitrile, Viton®, Ethylene Propylene or Teflon®
	Orifices:      Top Main	Stainless Steel Stainless Steel
Electrical	Standard Housing:	Encapsulated Waterproof Conduit (NEMA 4/4X)
	Optional Housings:	Metallic Conduit, Explosion-proof (NEMA 7), Grommet, Open Frame, Junction Box (single or dual knockouts), DIN; Contact GC Valves Customer Service for others.
	Standard Voltages:	24, 120, 240 AC 60 Hz; 50 Hz available 6, 12, 24 DC; Contact GC Valves Customer Service for Additional Voltages.
	Voltage Tolerance:	±10% of applicable voltage
	Coil Classes:	F, H, N
	Standard Lead Length:	24 inch
Operating Temperature	Ambient (Nominal):	32° to 125°F
Mounting	Position	Any
Approvals*	Agency	UL Listed, UL Recognized, CSA Approved

\* Not available for all variations

© Registered Trademark of DuPont Co.

## Dimensions/Weight

<b>Weight (lbs.)</b>
1.2



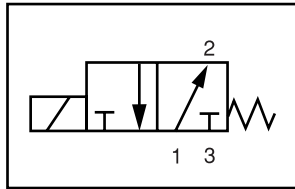
GC Valves Customer Service: 800-828-0484 (7:30am to 4pm ET) or 800-582-4232 (7:30am to 4pm PT)



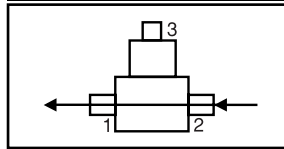
# S314 – 1/4" NPT, Stainless Steel Body, Normally Open

## Valve Selection List

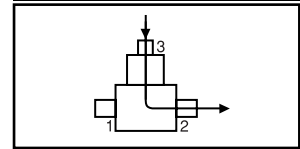
Normally Open



Energized



De-Energized



Pipe Size NPT	Orifice Size IN		C <sub>v</sub>		Operating Pressure Differential (psi)						Max Fluid Temp. °F	Seal Material	Power Consumption (Watts)		Model Code ( 120V/60HZ — 110V/50HZ ) Shown	
	Main	Top	Main	Top	Maximum								AC	DC		
					Air/Gas		Water		Light Oil							
					AC	DC	AC	DC	AC	DC						
																Stainless Steel Body
1/4	3/64	3/64	.05	.05	150	150	150	150	—	—	295	EPR	8	9	S314GF02C3BC3	
	3/32	1/16	.20	.10	80	80	80	80	—	—	295	EPR	8	9	S314GF02C3BW7	
	3/32	3/32	.20	.20	45	45	45	45	—	—	295	EPR	8	9	S314GF02C3BC9	
	5/32	3/32	.41	.20	30	15	30	15	—	—	295	EPR	8	9	S314GF02C3BV9	
1/4	3/64	3/64	.05	.05	150	150	150	150	150	150	180	Nitrile	8	9	S314GF02N3BC3	
	3/32	1/16	.20	.10	80	80	80	80	80	80	180	Nitrile	8	9	S314GF02N3BW7	
	3/32	3/32	.20	.20	45	45	45	45	45	45	180	Nitrile	8	9	S314GF02N3BC9	
	5/32	3/32	.41	.20	30	15	30	15	30	15	180	Nitrile	8	9	S314GF02N3BV9	
1/4	3/64	3/64	.05	.05	150	150	150	150	150	150	230	Viton	8	9	S314GF02V3BC3	
	3/32	1/16	.20	.10	80	80	80	80	80	80	230	Viton	8	9	S314GF02V3BW7	
	3/32	3/32	.20	.20	45	45	45	45	45	45	230	Viton	8	9	S314GF02V3BC9	
	5/32	3/32	.41	.20	30	15	30	15	30	15	230	Viton	8	9	S314GF02V3BV9	
1/4	3/64	3/64	.05	.05	150	150	150	150	150	150	366*	Teflon	8	9	S314GF02T3BC3	
	3/32	1/16	.20	.10	80	80	80	80	80	80	366*	Teflon	8	9	S314GF02T3BW7	
	3/32	3/32	.20	.20	45	45	45	45	45	45	366*	Teflon	8	9	S314GF02T3BC9	
	5/32	3/32	.41	.10	30	15	30	15	30	15	366*	Teflon	8	9	S314GF02T3BV9	

\* Class H Coil Recommended for High Temperature Applications

GC Valves Customer Service: 800-828-0484 (7:30am to 4pm ET) or 800-582-4232 (7:30am to 4pm PT)

# S314 – 1/4" NPT, Stainless Steel Body, Normally Open



## Part Numbering

1	2	3	4	5	6	7	8	9	10	11	12	13
<b>S</b>	<b>3</b>	<b>1</b>	<b>4</b>	<b>G</b>	<b>F</b>	<b>0</b>	<b>2</b>	<b>C</b>	<b>3</b>	<b>B</b>	<b>C</b>	<b>3</b>
Series			Operating Mode	Housing*	Coil Class*	Voltage*		Seal Material	Body Material	Pipe Connection	Orifice Size (Main x Top)	
S31			4: Normally Open	G: Conduit	F: Class F	02: 120/60 110/50		C: EPR N: Nitrile V: Viton T: Teflon	3: Stainless Steel	B: 1/4" NPT	C3: 3/64" x 3/64" W7: 3/32" x 1/16" C9: 3/32" x 3/32" V9: 5/32" x 3/32"	
* See the "Engineering Guide" for additional voltages, variations and options.												

## Coil Data

Coil Family	
Type	Size
All	S3

Frequency (Hz)	60	50
Nominal Power (VA)	Inrush	36
	Holding	16



# **S314 – 1/4" NPT, Stainless Steel Body, Normally Open**

**This Page Intentionally Blank**