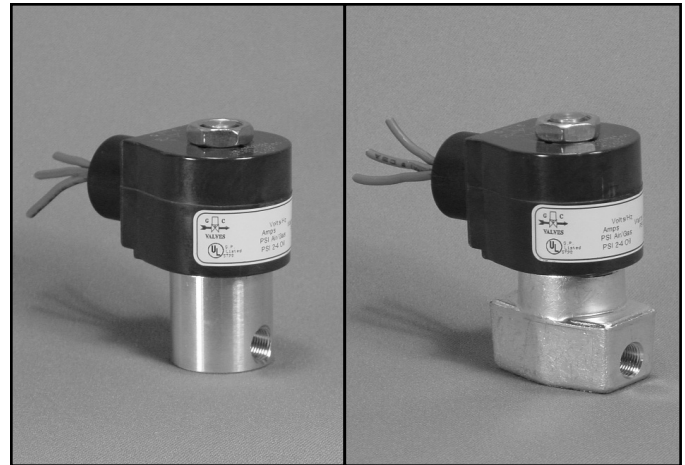


1/8" NPT Brass Body 2-Way Direct Acting Normally Closed



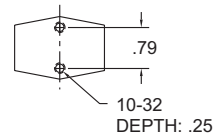
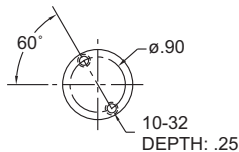
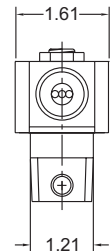
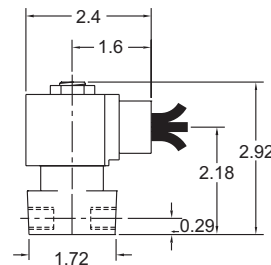
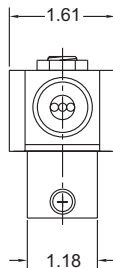
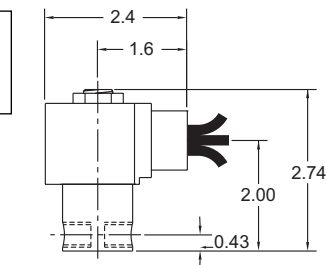
| | | |
|-----------------------|-----------------------|---|
| Materials | Seals: | Nitrile, Viton®, Ethylene Propylene, Teflon®, Rulon |
| | Orifice: | Stainless Steel |
| Electrical | Standard Housing: | Encapsulated Waterproof Conduit (NEMA 4/4X) |
| | Optional Housings: | Metallic Conduit, Explosion-proof (NEMA 7), Grommet, Open Frame, Junction Box (single or dual knockouts), DIN; Contact GC Valves Customer Service for others. |
| | Standard Voltages: | 24, 120, 240 AC 60 Hz; 50 Hz available 6, 12, 24 DC; Contact GC Valves Customer Service for Additional Voltages. |
| | Voltage Tolerance: | ±10% of applicable voltage |
| | Coil Classes: | F, H, N |
| | Standard Lead Length: | 24 inch |
| Operating Temperature | Ambient (Nominal): | 32°F to 125°F |
| Mounting | Position: | Any |
| Approvals* | Agency: | UL Safety Shutoff, UL Listed, UL Recognized, CSA Approved, FM Certified |

* Not available for all variations

© Registered Trademark of DuPont Co.

Dimensions/Weight

Weight (lbs.)
0.9



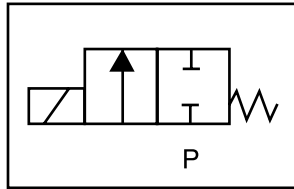
GC Valves Customer Service: 800-828-0484 (7:30am to 4pm ET) or 800-582-4232 (7:30am to 4pm PT)



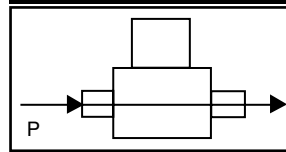
S311 – 1/8" NPT, Brass Body, Normally Closed

Valve Selection List

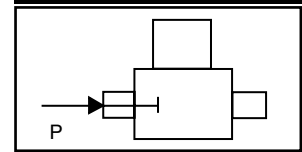
Normally Closed



Energized



De-Energized



| Pipe Size NPT | Orifice Size in. | C _v | Operating Pressure Differential (psi) | | | | | | | | | | Max Fluid Temp. °F | Seal Material | Power Consumption (Watts) | | Model Code (120V/60HZ — 110V/50HZ) Shown | |
|------------------|---------------------|----------------|---------------------------------------|------|-------|------|-----------|------|--------|----|-----|---------|--------------------------|---------------|---------------------------------|---------------|--|---------------|
| | | | Maximum | | | | | | | | | | | | AC | DC | | |
| | | | Air/Gas | | Water | | Light Oil | | Steam* | | | | | | | | | |
| | | | AC | DC | AC | DC | AC | DC | AC | DC | AC | DC | | | | | | |
| 1/8 | 1/32 | .03 | 0 | 2000 | 2000 | 2000 | 2000 | 2000 | 2000 | — | — | 150* | 150* | 295 | EPR | 8 | 9 | S311GF02C8AC1 |
| | 3/64 | .05 | 0 | 770 | 420 | 770 | 420 | — | — | — | — | 150* | 150* | 295 | EPR | 8 | 9 | S311GF02C8AC3 |
| | 1/16 | .10 | 0 | 560 | 185 | 560 | 185 | — | — | — | — | 150* | 150* | 295 | EPR | 8 | 9 | S311GF02C8AC5 |
| | 5/64 | .15 | 0 | 400 | 150 | 400 | 150 | — | — | — | — | 150* | 150* | 295 | EPR | 8 | 9 | S311GF02C8AC7 |
| | 3/32 | .21 | 0 | 300 | 130 | 300 | 130 | — | — | — | — | 150* | 130* | 295 | EPR | 8 | 9 | S311GF02C8AC9 |
| | 7/64 | .29 | 0 | 210 | 90 | 210 | 90 | — | — | — | — | 150* | 90* | 295 | EPR | 8 | 9 | S311GF02C8AD3 |
| | 1/8 | .32 | 0 | 155 | 60 | 155 | 60 | — | — | — | — | 150* | 60* | 295 | EPR | 8 | 9 | S311GF02C8AD5 |
| | 5/32 | .43 | 0 | 105 | 35 | 105 | 35 | — | — | — | — | 105* | 35* | 295 | EPR | 8 | 9 | S311GF02C8AD7 |
| | 3/16 | .49 | 0 | 75 | 20 | 75 | 20 | — | — | — | — | 75* | 20* | 295 | EPR | 8 | 9 | S311GF02C8AE1 |
| | 1/4 | .85 | 0 | 35 | 15 | 35 | 15 | — | — | — | — | 35* | 15* | 295 | EPR | 8 | 9 | S311GF02C9AE7 |
| | 9/32 | 1.0 | 0 | 20 | 10 | 20 | 10 | — | — | — | — | 20* | 10* | 295 | EPR | 8 | 9 | S311GF02C9AF1 |
| 3/8 | 1.1 | 0 | 15 | 5 | 15 | 5 | — | — | — | — | 15* | 5* | 295 | EPR | 8 | 9 | S311GF02C9AF5 | |
| 1/8 | 1/32 | .03 | 0 | 2000 | 2000 | 2000 | 2000 | 2000 | 2000 | — | — | 180 | Nitrile | 8 | 9 | S311GF02N8AC1 | | |
| | 3/64 | .05 | 0 | 770 | 420 | 770 | 420 | 770 | 420 | — | — | 180 | Nitrile | 8 | 9 | S311GF02N8AC3 | | |
| | 1/16 | .10 | 0 | 560 | 185 | 560 | 185 | 560 | 185 | — | — | 180 | Nitrile | 8 | 9 | S311GF02N8AC5 | | |
| | 5/64 | .15 | 0 | 400 | 150 | 400 | 150 | 400 | 150 | — | — | 180 | Nitrile | 8 | 9 | S311GF02N8AC7 | | |
| | 3/32 | .21 | 0 | 300 | 130 | 300 | 130 | 300 | 130 | — | — | 180 | Nitrile | 8 | 9 | S311GF02N8AC9 | | |
| | 7/64 | .29 | 0 | 210 | 90 | 210 | 90 | 210 | 90 | — | — | 180 | Nitrile | 8 | 9 | S311GF02N8AD3 | | |
| | 1/8 | .32 | 0 | 155 | 60 | 155 | 60 | 155 | 60 | — | — | 180 | Nitrile | 8 | 9 | S311GF02N8AD5 | | |
| | 5/32 | .43 | 0 | 105 | 35 | 105 | 35 | 105 | 35 | — | — | 180 | Nitrile | 8 | 9 | S311GF02N8AD7 | | |
| | 3/16 | .49 | 0 | 75 | 20 | 75 | 20 | 75 | 20 | — | — | 180 | Nitrile | 8 | 9 | S311GF02N8AE1 | | |
| | 1/4 | .85 | 0 | 35 | 15 | 35 | 15 | 35 | 15 | — | — | 180 | Nitrile | 8 | 9 | S311GF02N9AE7 | | |
| | 9/32 | 1.0 | 0 | 20 | 10 | 20 | 10 | 20 | 10 | — | — | 180 | Nitrile | 8 | 9 | S311GF02N9AF1 | | |
| 3/8 | 1.1 | 0 | 15 | 5 | 15 | 5 | 15 | 5 | — | — | 180 | Nitrile | 8 | 9 | S311GF02N9AF5 | | | |
| 1/8 | 1/32 | .03 | 0 | 2000 | 2000 | 2000 | 2000 | 2000 | 2000 | — | — | 230 | Viton | 8 | 9 | S311GF02V8AC1 | | |
| | 3/64 | .05 | 0 | 770 | 420 | 770 | 420 | 770 | 420 | — | — | 230 | Viton | 8 | 9 | S311GF02V8AC3 | | |
| | 1/16 | .10 | 0 | 560 | 185 | 560 | 185 | 560 | 185 | — | — | 230 | Viton | 8 | 9 | S311GF02V8AC5 | | |
| | 5/64 | .15 | 0 | 400 | 150 | 400 | 150 | 400 | 150 | — | — | 230 | Viton | 8 | 9 | S311GF02V8AC7 | | |
| | 3/32 | .21 | 0 | 300 | 130 | 300 | 130 | 300 | 130 | — | — | 230 | Viton | 8 | 9 | S311GF02V8AC9 | | |
| | 7/64 | .29 | 0 | 210 | 90 | 210 | 90 | 210 | 90 | — | — | 230 | Viton | 8 | 9 | S311GF02V8AD3 | | |
| | 1/8 | .32 | 0 | 155 | 60 | 155 | 60 | 155 | 60 | — | — | 230 | Viton | 8 | 9 | S311GF02V8AD5 | | |
| | 5/32 | .43 | 0 | 105 | 35 | 105 | 35 | 105 | 35 | — | — | 230 | Viton | 8 | 9 | S311GF02V8AD7 | | |
| | 3/16 | .49 | 0 | 75 | 20 | 75 | 20 | 75 | 20 | — | — | 230 | Viton | 8 | 9 | S311GF02V8AE1 | | |
| | 1/4 | .85 | 0 | 35 | 15 | 35 | 15 | 35 | 15 | — | — | 230 | Viton | 8 | 9 | S311GF02V9AE7 | | |
| | 9/32 | 1.0 | 0 | 20 | 10 | 20 | 10 | 20 | 10 | — | — | 230 | Viton | 8 | 9 | S311GF02V9AF1 | | |
| 3/8 | 1.1 | 0 | 15 | 5 | 15 | 5 | 15 | 5 | — | — | 230 | Viton | 8 | 9 | S311GF02V9AF5 | | | |

* Class H Coil Recommended for Steam and Other High Temperature Applications

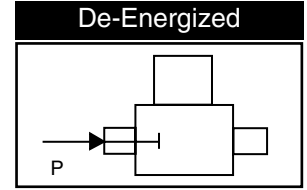
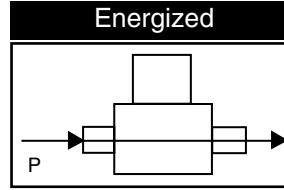
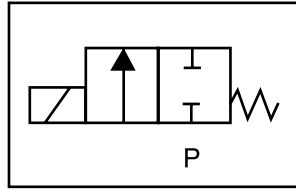
GC Valves Customer Service: 800-828-0484 (7:30am to 4pm ET) or 800-582-4232 (7:30am to 4pm PT)

S311 – 1/8" NPT, Brass Body, Normally Closed



Valve Selection List

Normally Closed



| Pipe Size NPT | Orifice Size in. | C _v | Minimum | Operating Pressure Differential (psi) | | | | | | | | Max Fluid Temp. °F | Seal Material | Power Consumption (Watts) | | Model Code (120V/60HZ — 110V/50HZ Shown) |
|------------------|---------------------|----------------|---------|---------------------------------------|------|-------|------|-----------|------|--------|------|--------------------------|---------------|---------------------------|----|--|
| | | | | Maximum | | | | | | | | | | AC | DC | |
| | | | | Air/Gas | | Water | | Light Oil | | Steam* | | | | | | |
| | | | | AC | DC | AC | DC | AC | DC | AC | DC | | | AC | DC | Brass Body |
| 1/8 | 1/32 | .03 | 0 | 2000 | 2000 | 2000 | 2000 | 2000 | 2000 | 150* | 150* | 366 | Rulon | 8 | 9 | S311GF02R8AC1 |
| | 3/64 | .05 | 0 | 770 | 420 | 770 | 420 | 770 | 420 | 150* | 150* | 366 | Rulon | 8 | 9 | S311GF02R8AC3 |
| | 1/16 | .10 | 0 | 560 | 185 | 560 | 185 | 560 | 185 | 150* | 150* | 366 | Rulon | 8 | 9 | S311GF02R8AC5 |
| | 5/64 | .15 | 0 | 400 | 150 | 400 | 150 | 400 | 150 | 150* | 150* | 366 | Rulon | 8 | 9 | S311GF02R8AC7 |
| | 3/32 | .21 | 0 | 300 | 130 | 300 | 130 | 300 | 130 | 150* | 130* | 366 | Rulon | 8 | 9 | S311GF02R8AC9 |
| | 7/64 | .29 | 0 | 210 | 90 | 210 | 90 | 210 | 90 | 150* | 90* | 366 | Rulon | 8 | 9 | S311GF02R8AD3 |
| | 1/8 | .32 | 0 | 155 | 60 | 155 | 60 | 155 | 60 | 150* | 60* | 366 | Rulon | 8 | 9 | S311GF02R8AD5 |
| | 5/32 | .43 | 0 | 105 | 35 | 105 | 35 | 105 | 35 | 105* | 35* | 366 | Rulon | 8 | 9 | S311GF02R8AD7 |
| | 3/16 | .49 | 0 | 75 | 20 | 75 | 20 | 75 | 20 | 75* | 20* | 366 | Rulon | 8 | 9 | S311GF02R8AE1 |
| | 1/4 | .85 | 0 | 35 | 15 | 35 | 15 | 35 | 15 | 35* | 15* | 366 | Rulon | 8 | 9 | S311GF02R9AE7 |
| | 9/32 | 1.0 | 0 | 20 | 10 | 20 | 10 | 20 | 10 | 20* | 10* | 366 | Rulon | 8 | 9 | S311GF02R9AF1 |
| | 3/8 | 1.1 | 0 | 15 | 5 | 15 | 5 | 15 | 5 | 15* | 5* | 366 | Rulon | 8 | 9 | S311GF02R9AF5 |
| 1/8 | 1/32 | .03 | 0 | 2000 | 2000 | 2000 | 2000 | 2000 | 2000 | 150* | 150* | 366 | Teflon | 8 | 9 | S311GF02T8AC1 |
| | 3/64 | .05 | 0 | 770 | 420 | 770 | 420 | 770 | 420 | 150* | 150* | 366 | Teflon | 8 | 9 | S311GF02T8AC3 |
| | 1/16 | .10 | 0 | 560 | 185 | 560 | 185 | 560 | 185 | 150* | 150* | 366 | Teflon | 8 | 9 | S311GF02T8AC5 |
| | 5/64 | .15 | 0 | 400 | 150 | 400 | 150 | 400 | 150 | 150* | 150* | 366 | Teflon | 8 | 9 | S311GF02T8AC7 |
| | 3/32 | .21 | 0 | 300 | 130 | 300 | 130 | 300 | 130 | 150* | 130* | 366 | Teflon | 8 | 9 | S311GF02T8AC9 |
| | 7/64 | .29 | 0 | 210 | 90 | 210 | 90 | 210 | 90 | 150* | 90* | 366 | Teflon | 8 | 9 | S311GF02T8AD3 |
| | 1/8 | .32 | 0 | 155 | 60 | 155 | 60 | 155 | 60 | 150* | 60* | 366 | Teflon | 8 | 9 | S311GF02T8AD5 |
| | 5/32 | .43 | 0 | 105 | 35 | 105 | 35 | 105 | 35 | 105* | 35* | 366 | Teflon | 8 | 9 | S311GF02T8AD7 |
| | 3/16 | .49 | 0 | 75 | 20 | 75 | 20 | 75 | 20 | 75* | 20* | 366 | Teflon | 8 | 9 | S311GF02T8AE1 |
| | 1/4 | .85 | 0 | 35 | 15 | 35 | 15 | 35 | 15 | 35* | 15* | 366 | Teflon | 8 | 9 | S311GF02T9AE7 |
| | 9/32 | 1.0 | 0 | 20 | 10 | 20 | 10 | 20 | 10 | 20* | 10* | 366 | Teflon | 8 | 9 | S311GF02T9AF1 |
| | 3/8 | 1.1 | 0 | 15 | 5 | 15 | 5 | 15 | 5 | 15* | 5* | 366 | Teflon | 8 | 9 | S311GF02T9AF5 |

* Class H Coil Recommended for Steam and Other High Temperature Applications



S311 – 1/8" NPT, Brass Body, Normally Closed

Part Numbering

| 1 | 2 | 3 | 4 | 5 | 6 | 7 | 8 | 9 | 10 | 11 | 12 | 13 |
|----------|----------|----------|--------------------|------------|--------------------------|----------------------|----------|---|-----------------------------|-----------------|--|----------|
| S | 3 | 1 | 1 | G | F | 0 | 2 | C | 8 | A | C | 1 |
| Series | | | Operating Mode | Housing* | Coil Class* | Voltage* | | Seal Material | Body Material | Pipe Connection | Orifice Size | |
| S31 | | | 1: Normally Closed | G: Conduit | F: Class F H: Class H | 02: 120/60 110/50 | | C: EPR N: Nitrile V: Viton R: Rulon T: Teflon | 8: Brass 9: Forged Brass | A: 1/8" NPT | C1: 1/32" C3: 3/64" C5: 1/16" C7: 5/46" C9: 3/32" D3: 7/64" D5: 1/8" D7: 5/32" E1: 3/16" E7: 1/4" F1: 9/32" F5: 3/8" [®] | |

* See the "Engineering Guide" for additional voltages, variations and options.

[®]Brass

Coil Data

| Coil Family | |
|-------------|------|
| Type | Size |
| All | S3 |

| | | | |
|--------------------|---------|----|----|
| Frequency (Hz) | 60 | 50 | |
| Nominal Power (VA) | Inrush | 36 | 36 |
| | Holding | 13 | 14 |

GC Valves Customer Service: 800-828-0484 (7:30am to 4pm ET) or 800-582-4232 (7:30am to 4pm PT)