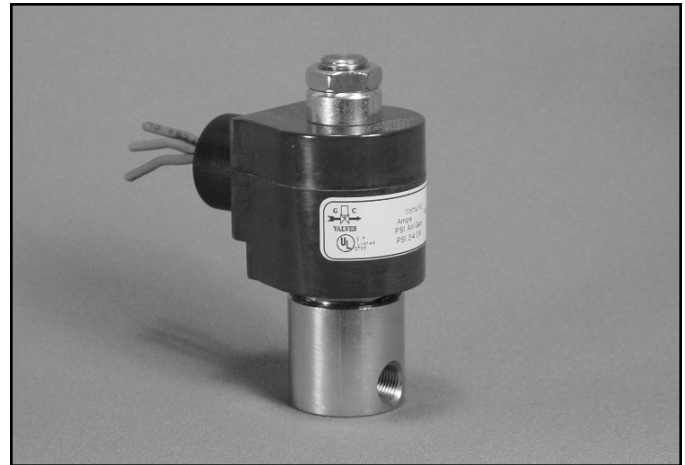


1/8" NPT Stainless Steel Body 2-Way Direct Acting Normally Open



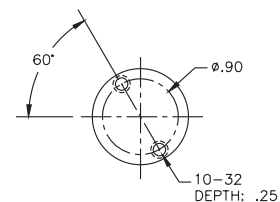
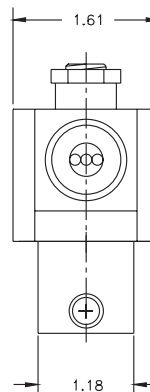
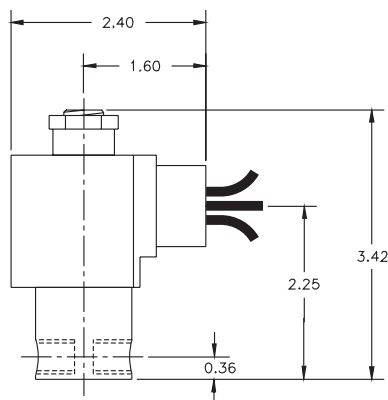
Materials	Seals:	Nitrile, Viton®, Ethylene Propylene, Teflon®, Rulon
	Orifice:	Stainless Steel
Electrical	Standard Housing:	Encapsulated Waterproof Conduit (NEMA 4/4X)
	Optional Housings:	Metallic Conduit, Explosion-proof (NEMA 7), Grommet, Open Frame, Junction Box (single or dual knockouts), DIN; Contact GC Valves Customer Service for others.
	Standard Voltages:	24, 120, 240 AC 60 Hz; 50 Hz available 6, 12, 24 DC; Contact GC Valves Customer Service for Additional Voltages.
	Voltage Tolerance:	±10% of applicable voltage
	Coil Classes:	F, H, N
	Standard Lead Length:	24 inch
Operating Temperature	Ambient (Nominal):	32°F to 125°F
Mounting	Position:	Any
Approvals*	Agency:	UL Listed, UL Recognized, CSA Approved

* Not available for all variations

© Registered Trademark of DuPont Co.

Dimensions/Weight

Weight (lbs.)
1.1



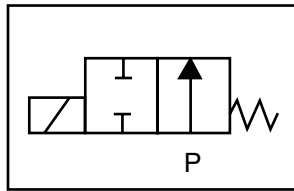
GC Valves Customer Service: 800-828-0484 (7:30am to 4pm ET) or 800-582-4232 (7:30am to 4pm PT)



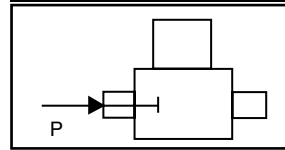
S302 – 1/8" NPT, Stainless Steel Body, Normally Open

Valve Selection List

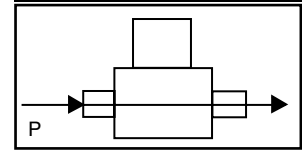
Normally Open



Energized



De-Energized



Pipe Size NPT	Orifice Size in.	C _v	Minimum	Operating Pressure Differential (psi)								Max Fluid Temp. °F	Seal Material	Power Consumption (Watts)		Model Code (120V/60HZ — 110V/50HZ Shown)		
				Maximum										AC	DC			
				Air/Gas		Water		Light Oil		Steam*								
				AC	DC	AC	DC	AC	DC	AC	DC			AC	DC	AC	DC	
1/8	1/32	.03	0	2400	2400	2400	2400	2400	2400	—	—	150*	150*	295	EPR	11	10	S302GF02C2AC1
	3/64	.05	0	600	600	600	600	600	600	—	—	150*	150*	295	EPR	11	10	S302GF02C2AC3
	1/16	.10	0	325	325	325	325	325	325	—	—	150*	150*	295	EPR	11	10	S302GF02C2AC5
	5/64	.15	0	235	235	235	235	235	235	—	—	150*	150*	295	EPR	11	10	S302GF02C2AC7
	3/32	.20	0	150	150	150	150	150	150	—	—	150*	150*	295	EPR	11	10	S302GF02C2AC9
	7/64	.25	0	125	125	125	125	125	125	—	—	125*	125*	295	EPR	11	10	S302GF02C2AD3
	1/8	.30	0	100	100	100	100	100	100	—	—	100*	100*	295	EPR	11	10	S302GF02C2AD5
	5/32	.43	0	60	60	60	60	60	60	—	—	60*	60*	295	EPR	11	10	S302GF02C2AD7
3/16	.65	0	40	40	40	40	40	40	—	—	40*	40*	295	EPR	11	10	S302GF02C2AE1	
1/8	1/32	.03	0	2400	2400	2400	2400	2400	2400	—	—	180	Nitrile	11	10	S302GF02N2AC1		
	3/64	.05	0	600	600	600	600	600	600	—	—	180	Nitrile	11	10	S302GF02N2AC3		
	1/16	.10	0	325	325	325	325	325	325	—	—	180	Nitrile	11	10	S302GF02N2AC5		
	5/64	.15	0	235	235	235	235	235	235	—	—	180	Nitrile	11	10	S302GF02N2AC7		
	3/32	.20	0	150	150	150	150	150	150	—	—	180	Nitrile	11	10	S302GF02N2AC9		
	7/64	.25	0	125	125	125	125	125	125	—	—	180	Nitrile	11	10	S302GF02N2AD3		
	1/8	.30	0	100	100	100	100	100	100	—	—	180	Nitrile	11	10	S302GF02N2AD5		
	5/32	.43	0	60	60	60	60	60	60	—	—	180	Nitrile	11	10	S302GF02N2AD7		
3/16	.65	0	40	40	40	40	40	40	—	—	180	Nitrile	11	10	S302GF02N2AE1			
1/8	1/32	.03	0	2400	2400	2400	2400	2400	2400	—	—	230	Viton	11	10	S302GF02V2AC1		
	3/64	.05	0	600	600	600	600	600	600	—	—	230	Viton	11	10	S302GF02V2AC3		
	1/16	.10	0	325	325	325	325	325	325	—	—	230	Viton	11	10	S302GF02V2AC5		
	5/64	.15	0	235	235	235	235	235	235	—	—	230	Viton	11	10	S302GF02V2AC7		
	3/32	.20	0	150	150	150	150	150	150	—	—	230	Viton	11	10	S302GF02V2AC9		
	7/64	.25	0	125	125	125	125	125	125	—	—	230	Viton	11	10	S302GF02V2AD3		
	1/8	.30	0	100	100	100	100	100	100	—	—	230	Viton	11	10	S302GF02V2AD5		
	5/32	.43	0	60	60	60	60	60	60	—	—	230	Viton	11	10	S302GF02V2AD7		
3/16	.65	0	40	40	40	40	40	40	—	—	230	Viton	11	10	S302GF02V2AE1			

* Class H Coil Recommended for Steam and Other High Temperature Applications

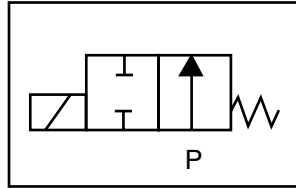
GC Valves Customer Service: 800-828-0484 (7:30am to 4pm ET) or 800-582-4232 (7:30am to 4pm PT)

S302 – 1/8" NPT, Stainless Steel Body, Normally Open

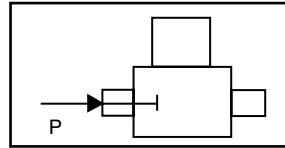


Valve Selection List

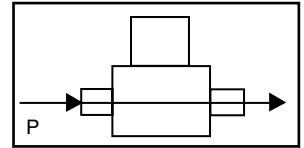
Normally Open



Energized



De-Energized



Pipe Size NPT	Orifice Size in.	C _v	Minimum	Operating Pressure Differential (psi)								Max Fluid Temp. °F	Seal Material	Power Consumption (Watts)		Model Code (120V/60HZ — 110V/50HZ Shown)
				Maximum										AC	DC	
				Air/Gas		Water		Light Oil		Steam*						
				AC	DC	AC	DC	AC	DC	AC	DC			AC	DC	AC
1/8	1/32	.03	0	2400	2400	2400	2400	2400	2400	150*	150*	366	Rulon	11	10	S302GF02R2AC1
	3/64	.05	0	600	600	600	600	600	600	150*	150*	366	Rulon	11	10	S302GF02R2AC3
	1/16	.10	0	325	325	325	325	325	325	150*	150*	366	Rulon	11	10	S302GF02R2AC5
	7/64	.15	0	235	235	235	235	235	235	150*	150*	366	Rulon	11	10	S302GF02R2AC7
	3/32	.20	0	150	150	150	150	150	150	150*	150*	366	Rulon	11	10	S302GF02R2AC9
	7/64	.25	0	125	125	125	125	125	125	125*	125*	366	Rulon	11	10	S302GF02R2AD3
	1/8	.30	0	100	100	100	100	100	100	100*	100*	366	Rulon	11	10	S302GF02R2AD5
	5/32	.43	0	60	60	60	60	60	60	60*	60*	366	Rulon	11	10	S302GF02R2AD7
3/16	.65	0	40	40	40	40	40	40	40*	40*	366	Rulon	11	10	S302GF02R2AE1	
1/8	1/32	.03	0	2400	2400	2400	2400	2400	2400	150*	150*	366	Teflon	11	10	S302GF02T2AC1
	3/64	.05	0	600	600	600	600	600	600	150*	150*	366	Teflon	11	10	S302GF02T2AC3
	1/16	.10	0	325	325	325	325	325	325	150*	150*	366	Teflon	11	10	S302GF02T2AC5
	5/64	.15	0	235	235	235	235	235	235	150*	150*	366	Teflon	11	10	S302GF02T2AC7
	3/32	.20	0	150	150	150	150	150	150	150*	150*	366	Teflon	11	10	S302GF02T2AC9
	7/64	.25	0	125	125	125	125	125	125	125*	125*	366	Teflon	11	10	S302GF02T2AD3
	1/8	.30	0	100	100	100	100	100	100	100*	100*	366	Teflon	11	10	S302GF02T2AD5
	5/32	.43	0	60	60	60	60	60	60	60*	60*	366	Teflon	11	10	S302GF02T2AD7
3/16	.65	0	40	40	40	40	40	40	40*	40*	366	Teflon	11	10	S302GF02T2AE1	

* Class H Coil Recommended for Steam and Other High Temperature Applications



S302 – 1/8" NPT, Stainless Steel Body, Normally Open

Part Numbering

1	2	3	4	5	6	7	8	9	10	11	12	13
S	3	0	2	G	F	0	2	C	2	A	C	1
Series			Operating Mode	Housing*	Coil Class*	Voltage*		Seal Material	Body Material	Pipe Connection	Orifice Size	
S30			2: Normally Open	G: Conduit	F: Class F H: Class H	02: 120/60 110/50		C: EPR N: Nitrile V: Viton R: Rulon T: Teflon	2: Stainless Steel	A: 1/8" NPT	C1: 1/32" C3: 3/64" C5: 1/16" C9: 3/32" D5: 1/8" E1: 3/16"	
* See the "Engineering Guide" for additional voltages, variations and options.												

Coil Data

Coil Family	
Type	Size
All	S4

Frequency (Hz)	60	50
Nominal Power (VA)	Inrush	46
	Holding	22

GC Valves Customer Service: 800-828-0484 (7:30am to 4pm ET) or 800-582-4232 (7:30am to 4pm PT)