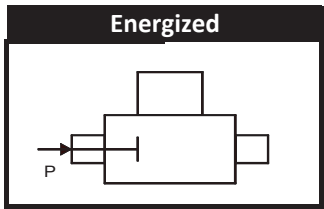
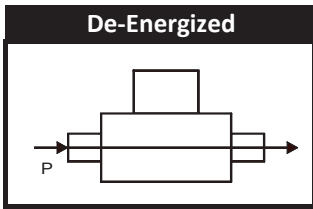
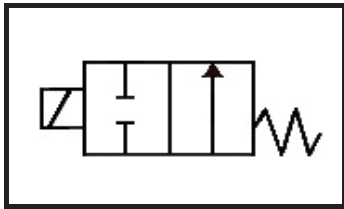




S712 - 2" NPT, Brass Body, Normally Open

Valve Selection List

Normally Open



Pipe Size NPT	Orifice Size IN	CV	Minimum	Operating Pressure Differential (psi)								Max Fluid Temp. °F	Seal Material	Power Consumption (Watts)		Model Code (120V/60HZ — 110V/50HZ Shown)
				Maximum										AC	DC	
				Air/Gas		Water		Light Oil		Steam*						
				AC	DC	AC	DC	AC	DC	AC	DC					Brass Body
2	2	48	7	200	150	150	150	—	—	—	—	295	EPR	8	9	S712GF02C9JJ7
	2	48	7	200	150	150	150	100	100	—	—	180	Nitrile	8	9	S712GF02N9JJ7
	2	48	7	200	150	150	150	100	100	—	—	230	Viton	8	9	S712G F02V9JJ7
	2	48	7	—	—	—	—	—	—	50*	50*	295	EPR	8	9	S712GH02C9JJ7

* Class H Coil Recommended for Steam and Other High Temperature Applications

Part Numbering

1	2	3	4	5	6	7	8	9	10	11	12	13
S	7	1	2	G	F	0	2	C	9	J	J	7
Series			Operating Mode	Housing*	Coil Class*	Voltage*		Seal Material	Body Material	Pipe Connection	Orifice Size	
S71			2: Normally Open	G: Conduit	F: Class F H: Class H	02: 120/60 110/50		C: EPR N: Nitrile V: Viton	9: Brass	J: 2" NPT	J7: 2"	
* See the "Engineering Guide" for additional voltages, variations and options.												

Coil Data

Coil Family	
Type	Size
All	S3

Frequency (Hz)		60	50
Nominal Power (VA)	Inrush	36	36
	Holding	18	19

GC Valves Customer Service: 800-828-0484 (7:30 AM to 5:00 PM ET)